

THINK TECH FORWARD

技术 更进一步

伊之密品牌管理前期策划 2023年1月版

YIZUMI

RIM

智造 至简

致力于橡胶制品生产与管理智能化、简单化

INTELLIGENT. SIMPLE.

Yizumi devoted to making the production and management of rubber parts intelligent and simple.

广东伊之密精密橡塑装备科技有限公司

Yizumi Rubber Machinery Co., Ltd.

地址: 广东省佛山市顺德五沙高新区顺昌路9号之三

ADD: No.9-3 Shunchang Road, Shunde, Foshan, Guangdong 528300, China

Email: rim@yizumi.com TEL:+86-757-2926 5156 / 86-757-2926 2192 www.yizumi.com

【免责声明】

[1] 本公司保留对样本中描述产品进行改进的权利, 规格如有变更, 恕不另行通知。

[2] 样本中的产品照片仅供参考, 产品以实物为准。

[3] 样本中数据为伊之密厂内测试检验得出, 仅作为参考信息, 不保证是最新数据, 一切以实际产品为准。

【DISCLAIMER】

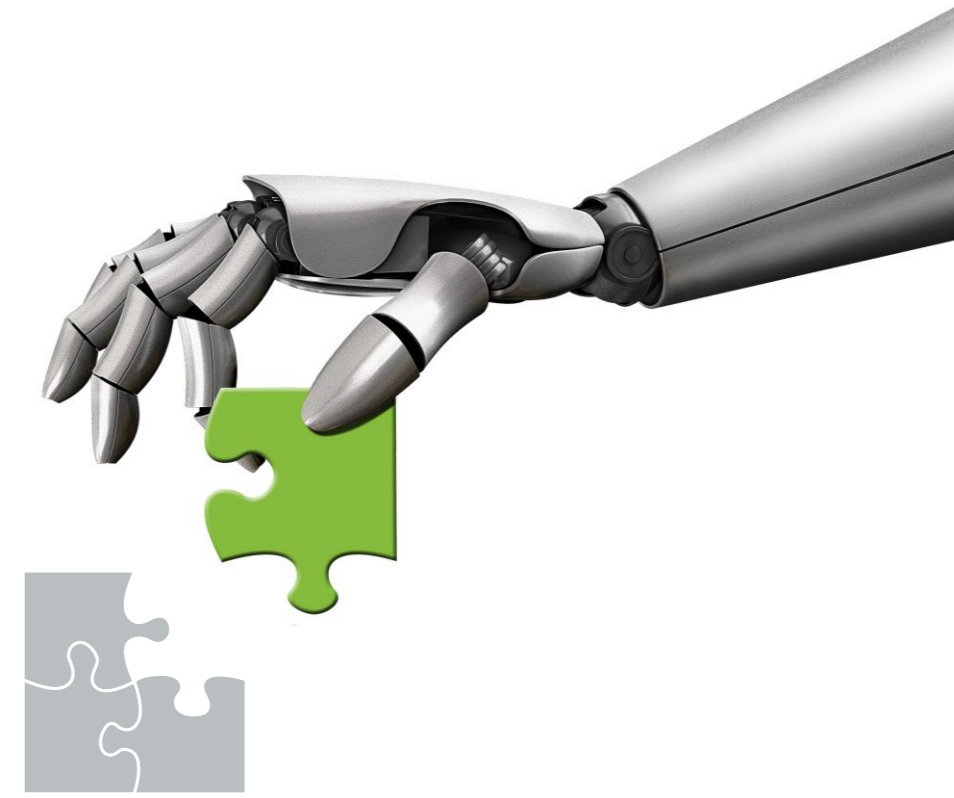
1. Yizumi reserves the right to improve the products described in the brochure. Specifications are subject to change without notice.

2. The product photos in the brochure are for reference only, and the products are subject to the actual product.

3. The data in the brochure obtained is from Yizumi's laboratory test, and it is for your reference only. It does not guarantee it is the latest data.

All information contained is subject to the actual product.





目录 Contents

关于我们 About Us	01	卧式机系列 Horizontal Series	29
全球化运营能力 Global Operation Capability	03	C型机系列 C-frame Series	31
规范生产 严控品质 Standardized Production, Strict Quality Management	05	亚标系列 Asian Series	33
研发实力与成果 R & D Capability and Achievements	07	特殊机型 Special Machines Series	37
模块化理念, 灵活满足客户需求 Modular Concept, Flexible to Meet Customers' Needs	09	平板机系列 Compression Press Series	39
4.i 橡胶制品智能制造解决方案 4.i Intelligent Manufacturing Solutions for Rubber Parts	11	电力行业专用机 Specialized Machines for Energy Industry	41
第三代能源与温度管理系统 The 3 rd Generation Energy and Temperature Management System	13	LSR电缆附件成型专用机 LSR Cable Accessories Clamping Molding Machine	45
V5控制与管理系统 V5 Control and Management System	15	空气弹簧成型专用机 Air Spring Molding Machine	46
注射单元 Injection Unit	17	无接头橡胶履带成型专用机 Joint-free Rubber Track Molding Machine	47
合模单元(常用机型) Clamping Unit of General Models	21	金刚石绳锯成型专用机 Diamond Wire Saw Molding Machine	48
行业应用方案 Industry Application	23	模具 Molds	49
欧标系列 European Series	25	YFO服务标准 Yizumi Factory Outlet Service	51

智造 至简

致力于橡胶制品生产与管理智能化、简单化

Intelligent. Simple.

Yizumi devoted to making the production and management of rubber parts intelligent and simple.

为满足客户和市场对智能化、简单化的需求，我们运用模块化理念对设备进行技术革新和模块化设计，客户通过简单的选择即可获得量身定制的、智能化的、更高性价比的解决方案。

In order to meet customer needs and the market requirements for intelligence and modularization, we upgraded technology and adopted module design with the concept of modularization. Customers could receive customized, intelligent, and high cost-effective solutions by simple choices.



关于我们

ABOUT US

SINCE 2002

伊之密股份有限公司创始于2002年，立足中国广东，放眼全球发展，专注高分子材料及金属成型领域，现已成立注塑机、压铸机、橡胶机、高速包装系统、机器人自动化集成系统等多个事业部，是一家集设计、研发、生产、销售及服务为一体的装备供应商。

广东伊之密精密橡塑装备科技有限公司为伊之密集团控股子公司，成立于2009年，是橡胶注射成型行业两项国家标准起草单位，其生产制造的橡胶注射成型机雄踞中国市场前列，广泛应用于汽车、电力、电子等行业，以及轨道交通、医疗、家电等领域各类橡胶制品。依托股份公司先进、全面的基础技术和橡胶机团队的丰富经验与专业技术，伊之密能为客户提供量身定制的解决方案，满足全球客户的个性化需求。

愿景：成为成型装备领域的世界级企业

使命：全球智慧 装备全球

价值观：超前思维、超常应变、超越自我、同担共享

理念：持续创新 科技向善

Yizumi Holdings Co., Ltd. was founded in 2002, based in Guangdong, China, with a global perspective, focusing in the field of polymer and metal material molding. As a comprehensive equipment and solution provider, the company has technological know-how and integrated R&D, production, sales and service, and has set up plastic injection machine division, die casting machine division, rubber injection machine division, high speed packaging system division, and robotic automation system division.

Yizumi Rubber Machinery Co., Ltd. a holding subsidiary of Yizumi Group, was founded in 2009 and has drafted two National Standards for the Rubber Injection Machine Industry. Yizumi rubber injection molding machine ranks among the forefront in China market with a wide range of applications for molding all kinds of rubber parts in automobile, energy, electronics, railway transportation, medical care, household appliances. Combining advanced and comprehensive foundation technology from Yizumi group and considerable experience and specialized technology from the rubber machinery team, Yizumi can provide customized solutions to satisfy global customers' personalized needs.

Our Vision : To be a world-class molding equipment solution provider

Our Mission : Global expertise - Solutions for the world

Our Value : Think forward. Respond swiftly. Strive higher. Advance together.

Our Ideals : Sustainable, innovative technology for humankind

世界即市场

Global Business

研发 + 制造 + 服务三位一体
Research, manufacture and service

5+ 全球创新平台 Global Innovation Platform

- 全球创新中心
- 高分子材料成型研究中心
- 金属材料成型研究中心
- 德国先进成型研究中心
- 智能互联研究中心
- Global Innovation Center
- Research Center for Polymer Processing
- Research Center for Die Casting and Metal Molding
- Research Center for Advanced Processing Technologies(DE)
- Research Center for Smart Manufacturing

5+ 伊之密国内生产基地 Factories(China)

- 中国高黎总部及生产工厂
- 中国五沙第一工厂
- 中国五沙第二工厂
- 中国五沙第三工厂
- 中国吴江生产工厂
- China Gaoli Headquarters
- China Wusha No.1 Factory
- China Wusha No.2 Factory
- China Wusha No.3 Factory
- China Wujiang Factory

2+ 海外工厂 Factories(Overseas)

- 美国俄亥俄生产工厂
- 印度古吉拉特邦新工厂
- U.S. Ohio Factory
- India Gujarat Factory

12+ 技术服务中心 Technical Service Center

- 德国亚琛研发中心及技术中心
- 德国利普斯塔特技术服务中心
- 北美技术中心
- 印度技术服务中心
- 巴西若因维利技术服务中心
- 巴西圣保罗技术服务中心
- 越南胡志明技术服务中心
- 越南河内技术服务中心
- 泰国技术服务中心
- 俄罗斯技术服务中心
- 墨西哥技术服务中心
- 土耳其技术服务中心
- Aachen Technical Center (Germany)
- Lippstadt Technical Center (Germany)
- Ohio Technical Center (U.S.)
- India Technical Center
- Joinville Technical Center (Brazil)
- São Paulo Technical Center (Brazil)
- Ho Chi Minh Technical Center (Vietnam)
- Hanoi Technical Center (Vietnam)
- Thailand Technical Center
- Russian Technical Center
- Mexico Technical Center
- Türkiye Technical Center

150+ 海外服务网点 Service Offices(Overseas)

- 德国、美国、法国、巴西、印度、韩国、越南、土耳其、波兰、以色列等
- Germany, U.S., France, Brazil, India, Korea, Vietnam, Turkey, Poland, Israel and so on.

96+ 中国地区服务网点 Service Offices(China)

23+ 海外备件中心 Spare Parts Center(Overseas)





DEMAG 16t

NO:16073016

DEMAG 10t

NO:16071025

YAZUHI

规范生产 严控品质

Standardized Production Strict Quality Management

伊之密致力于打造国际先进的制造平台，为生产提供坚实保障

Yizumi is committed to creating a globally advanced manufacturing platform and providing a reliable guarantee for production

伊之密一直深化公司转型，由量变到质变，通过连接欧洲先进成型技术，并在国内外成立研发和创新中心，不断引进国际先进技术，为客户拓展更大的竞争优势。

Yizumi has been deepening the transformation and upgrade of the company. Through the connection of advanced European molding technology, and the establishment of R&D center and innovation center in China and abroad, Yizumi always introduces internationally advanced technology to strengthen customer's competitiveness.



精密制造平台

Precise Manufacturing Platform

伊之密致力于打造国际先进的制造平台，其中包括多台千万级加工设备，如：日本“OKUMA”、“TOSHIBA”、“MORI SEIKI”、“MAZAK”、捷克TOS 重型镗铣加工中心等，为关键零部件的加工提供了有力的保证。

为了大幅度提高产品的零件精度、加工精度和组装精度，伊之密专门配备精良的原装进口检测仪器和设备，始终秉持高质量标准。

Yizumi is committed to building an internationally advanced manufacturing platform with multiple processing equipment worth tens of millions of dollars. This platform includes "OKUMA", "TOSHIBA", "MORI SEIKI" and "MAZAK" from Japan, TOS heavy boring and milling machining center from Czech Republic. Yizumi provides a powerful guarantee for the processing of key parts.

To significantly improve product's components accuracy, processing accuracy, and assembly accuracy, Yizumi is equipped with sophisticated original imported testing instruments and equipment, and always upholds high-quality standards.

模块化生产运营模式

Modular Production and Operation Model

伊之密通过模块化设计、模块化多级生产计划，实现小批量连续流作业与单件离散作业共存的运营模式，可满足常规机型与定制化机型的不同生产需求，进一步满足客户对产品质量、个性化及交货期的需求。

Production with flexible single order production co-existed operation mode. Yizumi can meet the production requirements of both conventional and customized machines and further satisfy customers' demands for production quality, individualized needs, and date of delivery.

严格的质量管理，提升客户满意度

Strict Quality Management, Better Customer Satisfaction

- 符合ISO9001:2015的质量管理体系；
 - 实施标准化作业，保证产品的一致性；
 - 全面实施自工序完结，杜绝不良品的流转；
 - 全员参与持续改善与创新工作——YKS持续改善体系。
- Following ISO9001:2015 Quality Management System;
- Implement standard operation procedures, guarantee the consistency of Yizumi products;
- Full implementation of self-process completion, to prevent the circulation of defective products;
- All staff participate in continuous improvement and innovation - Yizumi Kaizen System.



研发实力与成果

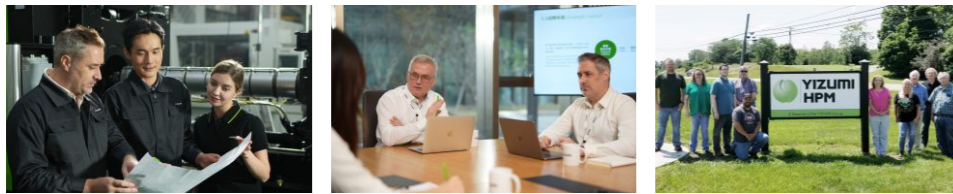
R & D Capability and Achievements

连接中欧先进成型技术

Connect Advanced Molding Technology Between China and Europe

在全球范围内设立多个研发中心，同时与多所高等院校就部分核心技术合作攻关，帮助客户实现橡胶及其它聚合物模压成型的智能化、简单化。

Yizumi has multiple R & D centers worldwide. It cooperates with several institutes and universities in some of the key technological know-how to provide customers with intelligent and simple molding solutions for their rubber and polymeric materials.



六大核心成果

Six Core Achievements

近十年取得约多项技术专利，在以下6个方面拥有自己的核心技术：

Obtained multiple patents in technology over the past decade, Yizumi owns core technological know-how in the following six aspects:

1 智能制造技术 Intelligent manufacturing solutions	2 第三代能源与温度管理系统 The 3 rd generation energy consumption and temperature control system	3 设备控制与管理软件 Machine control and management system
4 注射技术 Injection unit	5 合模技术 Clamping unit	6 行业应用技术 Industry applications

本样本中所提及的专利说明 Patents clarification as mentioned in the brochure:

发明专利(专利号) Invention Patent (Patent Number):

200910261472.1 / 200910261471.7 / 200910261483.X / 201010503461.2 / 201610224910.7 / 201610224847.7 / 201610224282.2

实用新型专利(专利号) Utility Model Patent (Patent Number):

201120389472.2 / 201120390769.0 / 201520500440.3 / 201520500375.4 / 201620344953.4 / 201620302225.7 / 201620408983.7 / 201620300982.0 / 201621182510.6 / 201721240286.6 / 201720974121.5 / 201721325974.2 / 201820894824.1 / 201820895686.9 / 201821672493.3 / 201920294713.1 / 201920294712.7 / 201920703181.2

IPD产品集成的创新研发模式

Integrated Product Development (IPD)

伊之密研发团队深度运用SolidWorks、Simulation、PLM各种设计工具的功能，采用IPD产品集成研发模式，致力帮助客户以更低成本实现更大差异化。

Yizumi R&D team utilizes the in-depth functions of SolidWorks, Simulation, PLM design tools, and adopts the IPD model to help customers achieve greater differentiation at the lowest cost.



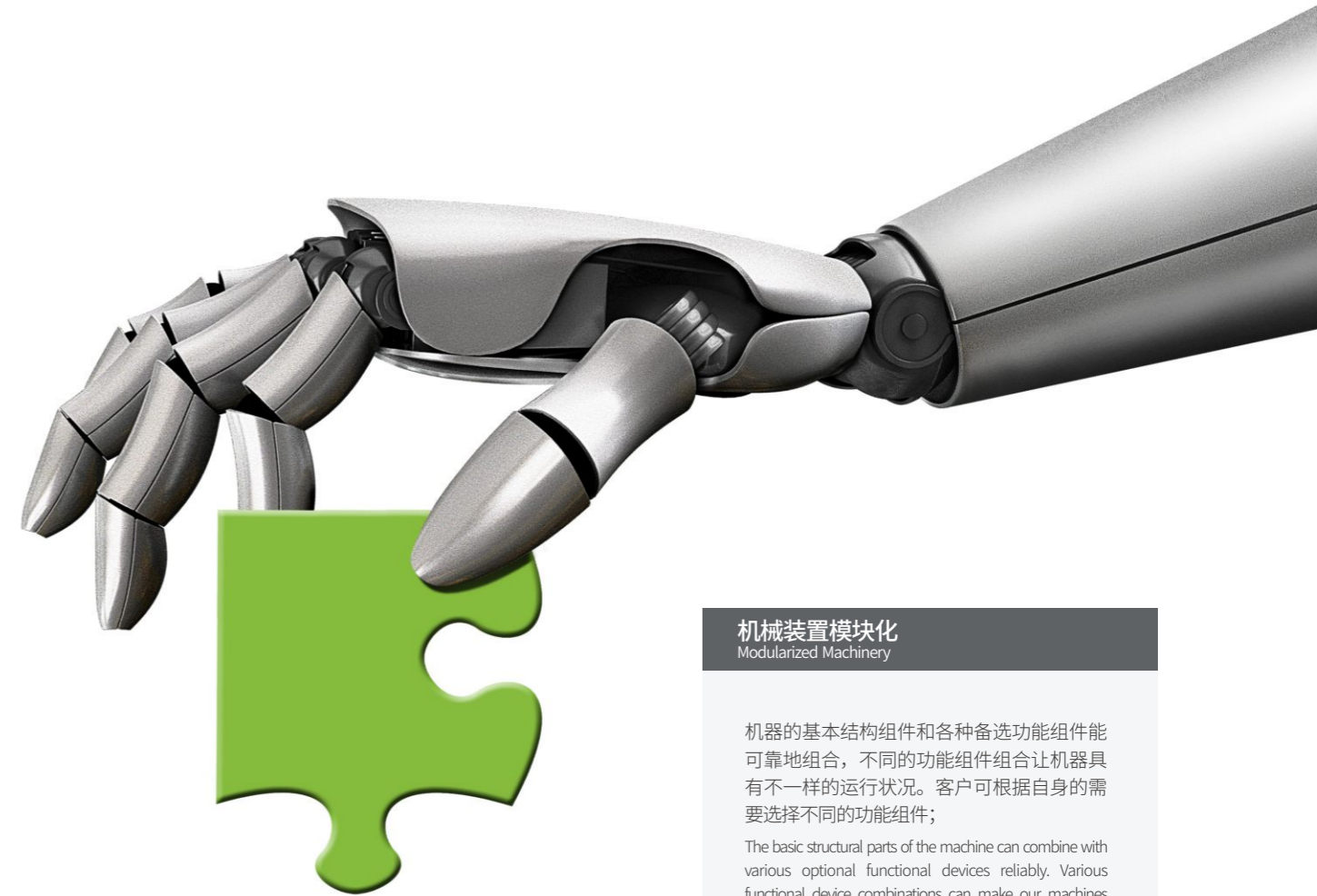
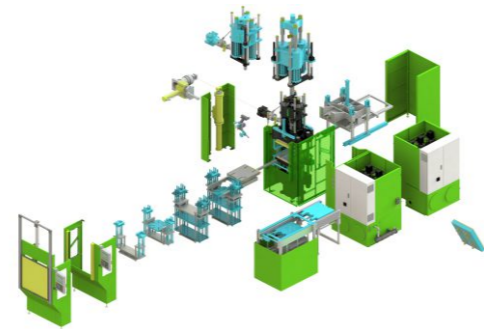
伊之密全球创新中心
YIZUMI Global Innovation Center

模块化理念 灵活满足客户需求

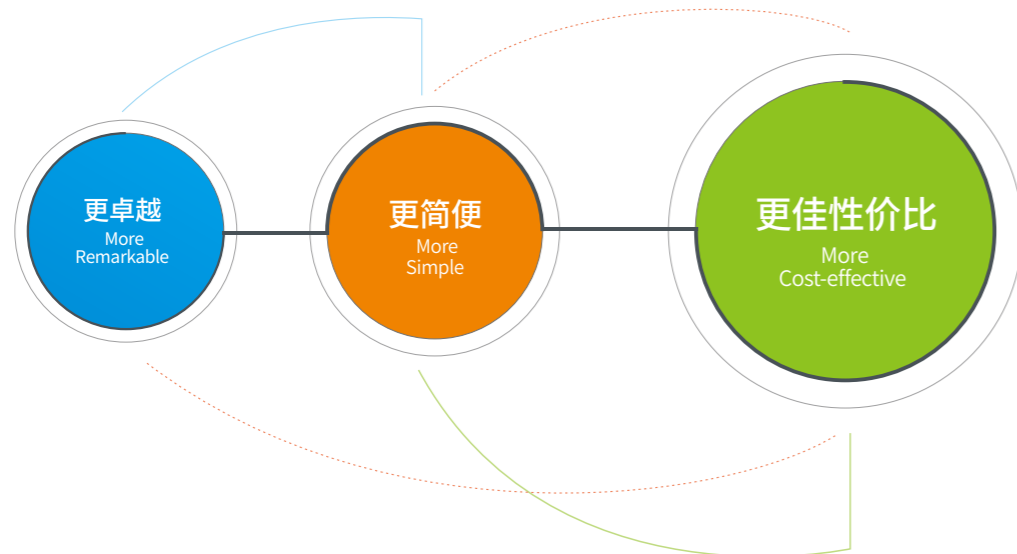
Modular Concept
Flexible to Meet Customers' Needs

运用模块化理念将以上技术形成系列化的标准模块，通过简单的选择即可形成最适合客户个性化需求的方案。

The concept of modularization is utilized to form a series of standard modules. By simple selection, suitable tailor-made solution can be made to meet customers' individual needs.



模块化核心价值主张 Modular Core Value Proposition



机械装置模块化 Modularized Machinery

机器的基本结构组件和各种备选功能组件能可靠地组合，不同的功能组件组合让机器具有不一样的运行状况。客户可根据自身的需要选择不同的功能组件；

The basic structural parts of the machine can combine with various optional functional devices reliably. Various functional device combinations can make our machines have different running states. Different functional devices can be selected according to customers' needs.

程序控制模块化 Modularized Program Control

电控系统与液压系统等控制模块可根据客户需求自由选择；

The electrical system, hydraulic system, and other control modules can be selected freely according to customers' benefits.

智能互联模块化 Modularized Intelligent Interconnection

客户能可根据生产管理需求，匹配选择CMS、MES等智能系统模块。

Customers can choose CMS, MES, and other intelligent systems according to their production management needs.

YIZUMI 4i

橡胶制品智能制造解决方案

4.i Intelligent Manufacturing Solutions for Rubber Parts

将汽车工业中精益生产 (IE) 与 IATF 16949:2016 的管理需求, 整合至智能设备硬件及软件的设计与工业互联网平台中, 为客户实现智能制造提供高品质的 4.i 智能产品, 满足汽配客户对生产全过程管理的各种需求, 同时帮助客户全面降低制造成本和管理成本, 并以此技术推广至其他行业客户。

Lean manufacturing (IE) and IATF 16949:2016 management requirements in the automotive industry are integrated into the design of intelligent equipment hardware & software, and industrial internet platform. Yizumi provides automotive customers with high-quality 4.i intelligent products to meet their various demands in the whole production process, meanwhile help customers to reduce manufacturing and management costs. This solution can be introduced to customers in other industries.



i IE

- 可通过智能管理系统实现作业时间测定, 制定标准工时;
- 人机操作分析, 协助管理者制定改善方向。
- Measure cycle time through intelligent management system, formulate standard time.
- Man-machine operation analysis, assist managers to make improvement strategy.

i IATF 16949:2016

- 符合 IATF 16949:2016 要求管理功能
- 4M变化点管理
 - ANDON报警
 - 电子目视化看板
 - E-SOP
- In accordance with IATF 16949:2016 management functions
- 4M change-point management
 - ANDON
 - Visual monitoring interface
 - E-SOP

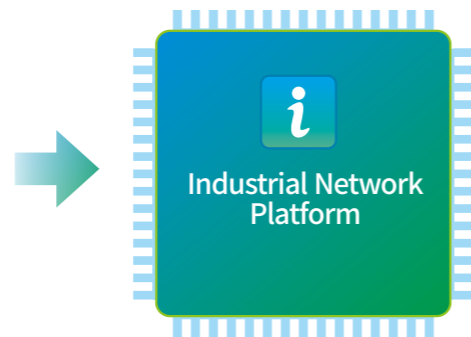
i Intelligent Equipment

高可靠性, 注射精度、注射时间、温度等在原有二代机基础上, 重新优化提升;

将控制系统升级为设备智能管理系统, 不仅能控制设备的动作与性能, 还能够进行与设备相关的设备管理和生产管理工作。

High reliability, injection precision, injection time, temperature, etc. further optimized on the basis of 2nd generation machine;

Control system upgraded with the intelligent management system. In addition to controlling the movement and performance of the equipment, it can implement equipment and production management.



YIZUMI e-service 为客户提供实时的服务系统

Deliver Real-time Service to Customers

通过 YIZUMI e-service, 您可获得全天移动快捷的远程维护和在线支持, 无论身在何地, 都可通过线上系统为客户提供快速便捷的在线售后服务, 长期确保设备保持最佳状态;

Through YIZUMI e-service, you can enjoy 24-hours online support, mobile and rapid remote repair and maintenance as well. Regardless of where you are, it can deliver a rapid, convenient, online after-sales service, ensuring the equipment to be maintained in the best condition for the long term.



伊点通 YiCMS (Condition Monitor System), 是依托于 Yi+ 智造平台, 应用物联网新一代 ICT 技术的生产监控系统。
YiCMS (Condition Monitor System) is a production monitoring system that relies on Yi+ intelligent manufacturing platform, with the application of the latest generation ICT technologies of IOT (Internet of Things).

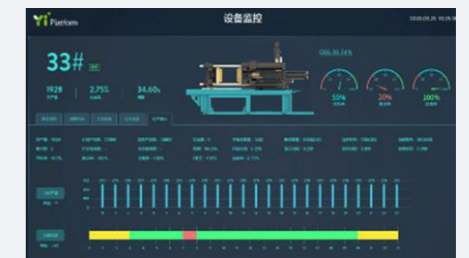
- 生产监控 Production Monitoring
- 生产统计 Production Statistics
- 故障管理 Fault Management
- 设备监控 Equipment Monitoring
- 预警管理 Forewarning Management
- 分析报表 Analysis Report
- 设备维保 Maintenance & Repair
- 工艺监控 Process Monitoring



YiCMS 可轻松升级为 YiMES 智造执行系统 (Yi Manufactory Execution System)
YiCMS can be easily upgraded to YiMES (Yi Manufactory Execution System)



- 生产管理 Production Management
- 订单管理 Order Management
- 生产监控 Production Monitoring
- 安灯管理 ANDON Management
- 质量管理 Quality Management
- 预警管理 Forewarning Management
- 设备管理 Equipment Management
- 能耗管理 Energy Management
- 模具管理 Mold Management
- 工艺管理 Process Management
- 报表看板 Report & Display
- 系统管理 System Management



YiMES 和 YiCMS 植入 IATF 16949:2016 质量管理要求; 并通过对大数据进行 AI 分析和计算, 实现远程诊断、预测性维护、风险预警和成本改良, 构建智慧企业大脑。

YiMES and YiCMS with IATF 16949:2016 quality management requirements implanted; through AI analysis and calculation of big data, remote diagnosis, predictive maintenance, risk forewarning and cost improvement can be realized and a smart enterprise brain is constructed.

第三代能源与温度管理系统

The 3rd Generation Energy and Temperature Management System

伊之密第三代能源与温度管理系统整机节能最高可达50%

研究每个动作从驱动、流动通道到负载所产生的速度、性能与能耗；研究每个细节的热传导、热对流到温度场与能耗。

Yizumi 3rd Generation Energy Consumption and Temperature Management System, Up to 50% Energy Saving

Deeply involved in the study of speed, performance and energy consumption of each action from drive, flow channels to load; Looking into each detail of heat conduction, heat convection to temperature field and energy consumption.

1. 第三代伺服节能技术

The 3rd Generation Energy-efficient Servo Technology

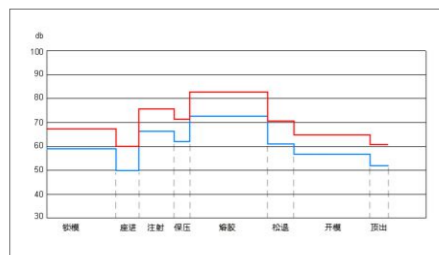
第三代伺服系统从电机、油泵、驱动软件、阀门、油道、油温控制方式等各个细节均作了系统的优化，比传统液压机节电30%-60%。

Optimized motor, oil pump, drive software, valve, oil channel, oil circuit control methods and other details, which saves 30%-60% energy compared to traditional hydraulic system.

低噪音 Low Noise

降低约20%

About 20% reduction compared to 2nd generation hydraulic system.



动力强 Strong Power

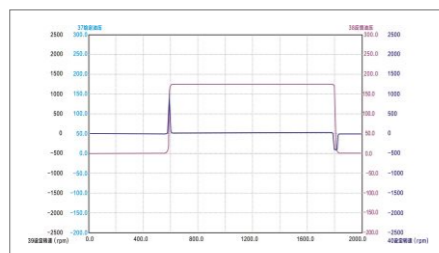
以200T为例，全速全压测试可实现5分钟不超载报警
Tested on 200T machine, at full speed, full pressure, 5 minutes without overloading.



响应快 Rapid Response

以200T为例，系统响应时间约40ms

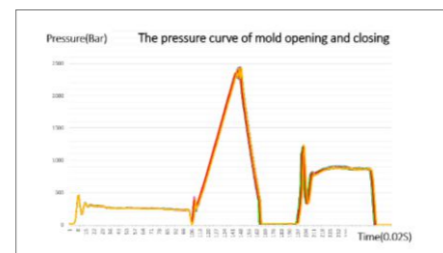
Tested on 200T machine, the system response time is around 40ms.



精度高 High Precision

压力、速度Cmk≥ 1.67，位置精度提升50%

Pressure & speed Cmk≥ 1.67, position precision improved by 50%.

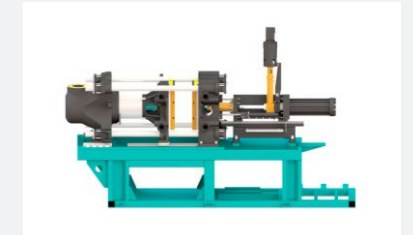


2. 低负载设计

Low Load Design

所有运动低负载设计，以H200F为例，一个高速的开合模全行程全周期能耗小于0.01kW·h。

Low load design for all motions. Tested on H200F machine, the energy consumption of fast mold opening and closing at full stroke and full cycle is less than 0.01kW·h.



3. 液压油路设计与元件

Hydraulic Oil Circuit Design and Components

仿真每个动作油量需求，选用低压降管道与阀门；采用一线品牌，确保内泄小且性能稳定。

Simulate oil demand of each movement, select low decline pressure pipes and valves; Adopt top brand components to prevent internal leakage and ensure stable performance.

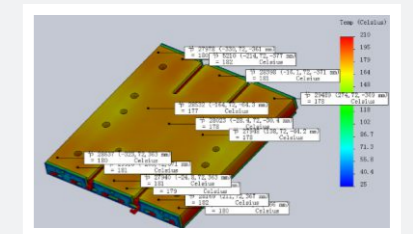


4. 温控单元 (部分机型采用)

Temperature Control Unit (some models only)

热板温度准确有利于制品成型质量与周期改善；而加热能耗占整机能耗50%以上，优化后可以减少能耗约25%。

- 热板采用仿真设计，温度分布更均匀；
- 不局限于热板，提升每个细节的热传递效率，降低热对流导致的能量损失；
- 采用经久耐用的隔热板和发热管。



The accuracy of heating plate temperature is conducive to the improvement of product molding quality and cycle; while the energy consumption of heating accounts for more than 50% of the whole machine, about 25% less energy consumption after optimization.

- Simulated heating plate design, more uniform temperature distribution.
- Not confined to heating plates, improve the heat transfer efficiency of every detail, reduce the energy loss caused by thermal convection
- Durable heating insulation plate and heating cartridge.

V5控制与管理系统

V5 Control and Management System



采用intel4核高速CPU，不仅机器的性能大幅提升，同时具备设备和生产管理8大功能，各功能区表单数据完全满足IATF 16949:2016或IE精益生产要求；使机器的操作、维护和管理智能化和简单化。

Using Intel 4-core high-speed CPU, the performance of machine is greatly improved, and it also has 8 major function modules for equipment and production management. The data sheets of each function module can fully meet the requirements of IATF 16949:2016 or IE lean production. Machine operation, maintenance and management is intelligent and simple.

V5控制主页面

V5 Control Home Page

网络功能

Network Function

可直接打开内嵌网页，方便远程访问和远程维护。

Embedded website can be viewed directly, convenient for remote access & maintenance.

文档功能

File Access

阅读机器文档；丰富的数据接口。

Machine file/data reading function; various data accessible.

自由编程

Free Editable

简单编辑，适合复杂的工艺流程；支持机器后续功能增加。

Simple editing, suitable for complex process flow; Support machine subsequent function upgrade.

快速设定

Quick Setting

点击图标，即可进入工艺设定界面；无需翻页。

One click to enter the process setting interface.



高速响应

High Response

CPU功能强大，运行流畅；对合模、塑化、注射的软件闭环控制高速响应。

Powerful CPU, smooth running; High response to the software close-loop control of clamping, plasticizing, injection motions.

人机友好

User-Friendly

21.5寸屏，多点触控，专业UI设计与HMI设计，图表示显示，视觉舒适，操作简单，即学即用。

21.5" screen, multi-touch, professional UI design and HMI design, graphic display, visual comfort, simple operation, ready to use.

智能锁模控制

Intelligent Clamping Control

- 自学习机台锁模保压效果；
- 根据制品的注射和硫化状态分析，自动识别锁模力，并自动修正或提示修正。

- Clamping force holding effect self-learning;
- Based on injection and curing status analysis, automatic identify the clamping force, and provides automatic correction or prompts correction.

多平台展示

Multi-Platform Display

基于HTML5技术，同网段下支持多面板、不同浏览器访问，且互不干扰。

Based on HTML5 technology, it supports multi-panel and different browser access under the same network segment without interfering with each other.



设备管理

Equipment Management System

- 智能监控设备运行状况，异常报警；
- 根据设备运行数据，提示保养；
- 设备履历自动呈现；
- OEE、MTBF、MTTR。

- Intelligent monitoring of equipment operation status, abnormal alarm;
- Prompt maintenance reminding according to equipment operation data;
- Equipment resume;
- Automatically present OEE, MTBF, MTTR.

关键参数Cmk测定

Determination of Key Parameter Cmk

- 通过连接上网，实现实时监控设备每模注射量；
- 定期确认设备劣化状况；提示改善。
- With Internet connection, real time monitor of the injection volume of each cycle;
- Periodically inspect machine operation status; remind maintenance if needed.

设备日常点检

Daily Check of Machine

- 开班点检提示，点检内容防错；
- 按IATF 16949:2016标准多语言点检项目、周期表；
- 异常报警；
- 手机点检(上网)。

- Routine check reminding at the beginning of each shift, detailed checklist to avoid mistakes;
- Implement IATF 16949:2016, provide multi-language inspection items and periodic table;
- Abnormal alarm;
- Routine check by mobile phone (Online).

能源管理

Energy Management

- 根据IATF 16949:2016能源管理规定，汇总能耗数据；
- 供能耗标准制定，分析及预测；
- 异常报警。

- Collect energy consumption data in accordance with IATF 16949:2016 energy management regulations;
- Formulate energy consumption standards for analysis and prediction;
- Abnormal alarm.

能源管理

Energy Management

- 根据IATF 16949:2016能源管理规定，汇总能耗数据；
- 供能耗标准制定，分析及预测；
- 异常报警。

- Collect energy consumption data in accordance with IATF 16949:2016 energy management regulations;
- Formulate energy consumption standards for analysis and prediction;
- Abnormal alarm.

V5管理主页面

V5 Management Home Page



电子SOP

E-SOP

- 随时查看标准书。
- SOP available at any time.

4M变化点管理

4M Change Point Management

- IATF 16949:2016要求；
- 4M管控，异常报警；
- 生产良品条件；
- 条形码识别。

- IATF 16949:2016 requirements;
- 4M control, abnormal alarm;
- Good production conditions;
- Barcode identification.

IE 时间研究

IE Time Study

- 可通过管理系统实现作业时间测定，制定标准工时；
- 人机操作分析。

- The working time can be measured through the management system, and the standard time can be set;
- Man-machine operation analysis.

可视化电子看板 (ANDON)

Visual Monitoring Interface (ANDON)

- 提供实时生产QCD管理数据；
- ANDON报警功能；
- 生产统计。

- Provide real-time production QCD management data;
- ANDON alarm function;
- Production statistics.

注射单元

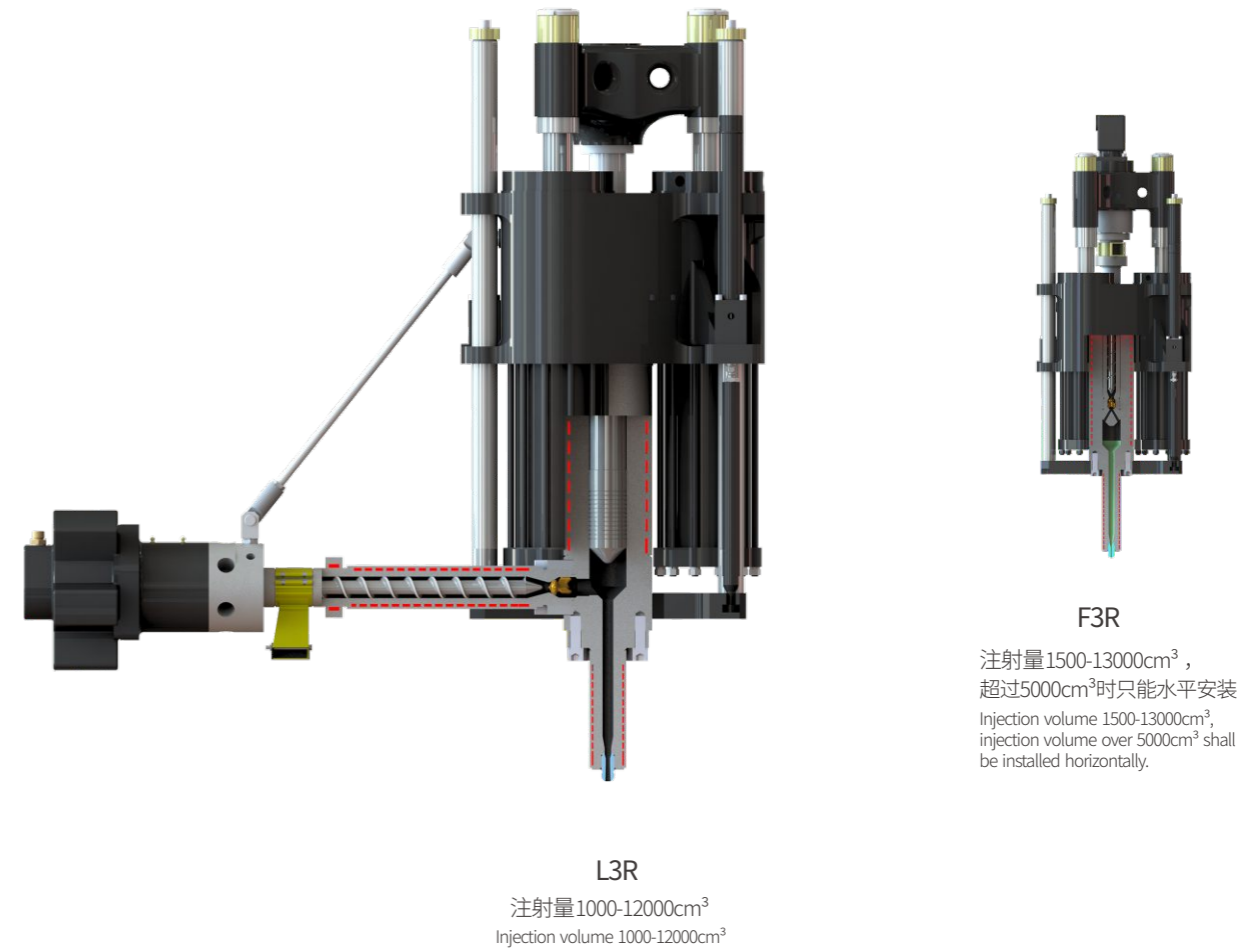
Injection Unit

定缸型3缸注射结构，简单、专业、精确、耐用，可满足广泛需求

拥有自主知识产权，已成功应用于全球近3000台设备中，有L3R、F3R两个系列。

Fixed 3-cylinder type injection structure, simple, professional, accurate, durable, can meet a wide range of needs.
With intellectual property, the fixed 3-cylinder type injection structure successfully used in nearly 3000 machines worldwide, L3R and F3R series.

- 在塑化过程中注射油缸不动，容易精确控制背压，结合专业的螺杆设计，应用范围广，常规橡胶、氟橡胶、热敏性橡胶和高硬度橡胶都很容易加工；
- 注射单元采用三个油缸，注射柱塞自由悬挂；自由对中，不易磨损，漏胶少，注射量稳定；
- 易于维护和清洁，只需卸下一颗螺丝即可轻松拆卸注射柱塞；
- 精确的背压+敏捷的止回装置+软件闭环控制，实现注射量精确控制；
- 整个注射单元均可平稳升降；
- 可以选择“F.I.L.O”或“F.I.F.O”
- During the plasticizing process, the injection cylinder does not move, and it is easy to accurately control the back pressure. Combined with the professional screw design, it has a wide range of applications. Conventional rubber, fluorine rubber, heat-sensitive rubber and high-hardness rubber can be easily processed;
- The injection unit adopts three cylinders and the injection piston is suspended freely. Free alignment, less wearing, less rubber leakage, stable injection volume;
- Easy to maintain and clean, the injection piston can be easily disassembled by removing only one bolt;
- Accurate back pressure + agile non-return device + software closed-loop control, which achieve accurate injection volume control;
- Injection unit can go up and down stably;
- "F.I.L.O" or "F.I.F.O" available.



备注：1、注射单元编码说明：L (F.I.L.O), F (F.I.F.O) 3 (3个注射油缸) R (橡胶)、P (塑料)、L (LSR) -1000(注射量1000cm³) A(注射力代号)；
2、●表示标配配置 ○表示选配配置 3、YL2-V200/YL2-V300选择以上注射单元时，注射压力会比表中参数小10%。

Note: 1.Injection Unit Code Meaning: L (F.I.L.O), F (F.I.F.O), 3 (3 Injection Cylinders), R (Rubber), L (LSR) - 1000 (Injection Volume 1000cm³), A (Injection Pressure Code)
2.● Standard ○ Optional 3. YL2-V200/YL2-V300 injection pressure will be 10% lower than the data sheet when using the above injection units.

系列代号 Series Code	L3R-1000A	L3R-2000A	L3R-3000B1	L3R-4000B1	L3R-4000C1	L3R-6000C1	L3R-6500D1	L3R-8000D1	L3R-8000D2	L3R-10000D1	L3R-12000D1	F3R-1500B1	F3R-3000B1	F3R-4000C1	F3R-5000C1	F3R-10000D1	F3RH-350	F3R-1500B2	F3R-2500B1	F3R-3300C1	F3R-4000C2	F3R-5000C1	F3R-4000D1	F3R-6000D1	F3R-8000D1			
注射单元 Injection Unit	注射压力 Injection Pressure/bar	2,600	2,200	2,000	1,900	2,100	2,100	2,500	2,000	2,500	2,000	1,700	2,200	2,100	2,500	2,000	1,700	3,750	2,200	2,100	2,000	2,000	2,000	2,400	2,000	2,000		
	螺杆直径 Screw Diameter/mm	40	40	50	50	50	50	65	65	65	65	65	35	40	45	45	55	32	40	40	50	50	50	50	55	55		
	入料口尺寸 Size of Rubber Inlet/mm	50X20	50X20	65X20	65X20	65X20	65X20	80X35	80X35	80X35	80X35	80X35	50X20	50X20	65X20	65X20	70X30	50X20	50X20	50X20	65X20	65X20	65X20	65X20	80X35	80X35		
合模单元 Clamping Unit	YL2-V200/YL2-V250	○	●	○								○	○					○	○	○								
	YL2-V300/YL2-V350	○	○	●	○							○	○					○	○		○							
	YL2-V450			○	●	○	○	○	○	○	○			○	○					○	○	○	○	○	○	○	○	○
	YL2-V600					○	●	○	○	○	○			○	○						○	○	○	○	○	○	○	
	YL3-V280	○	●	○	○								○	○						○	○	○	○	○	○	○	○	
	YL3-V440			○	○	●	○	○	○	○	○			○	○					○	○	○	○	○	○	○	○	
	YL3-V630					○	●	○	○	○	○			○	○						○	○	○	○	○	○	○	
YL3-V800/YL3-V1200					○	○	○	○	●	○	○			○	○					○	○	○	○	○	○	○		

注射单元

Injection Unit

根据注射量大小和用途，伊之密提供不同结构的橡胶注射装置。伊之密集团公司内具有国际技术水平的塑料、LSR塑化注射技术，可以组合到部分机器中，为某些特定制品提供更佳解决方案。

According to different injection volume and application, Yizumi provides rubber injection system with different structures. Yizumi Group's world level plastic and LSR plastic injection technology can be combined into some machines to provide better solutions for certain specific products.

用于橡胶或HTV的其它塑化注射结构

Other Plasticizing Injection Structures for Rubber or HTV



F1R

1个注射油缸，F.I.F.O
可竖立安装或水平安装

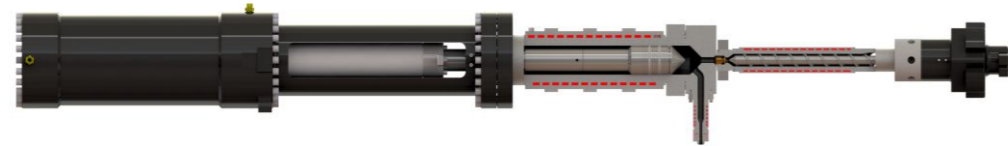
F1R - 1 injection cylinder, F.I.F.O,
vertically or horizontally mounted.



S1R

特殊结构的1个注射油缸，竖立安装。

S1R - 1 injection cylinder
with special structure,
vertically mounted.



L1R

1个注射油缸，F.I.L.O，水平安装

L1R - 1 injection cylinder, F.I.L.O, vertically mounted.

用于塑料与LSR的塑化注射结构

Plasticizing Injection Structure for Plastics and LSR



F1L

用于LSR成型，1个注射油缸，
F.I.F.O，可竖立安装亦可水平安装

F1L - for LSR molding, 1 injection cylinder,
F.I.F.O, vertically or horizontally mounted.



F1P

用于塑料成型，1个注射油缸，F.I.F.O

F1P - for plastic molding, 1
injection cylinder, F.I.F.O.



F2L

用于LSR成型，2个注射油缸，F.I.F.O，
可竖立安装亦可水平安装

F2L - for LSR molding, F.I.F.O, 2 injection
cylinders, vertically or horizontally mounted.



F2P

2个注射油缸，F.I.F.O，可竖立安装亦可
水平安装

F2P - 2 injection cylinders, F.I.F.O, vertically or
horizontally mounted.

备注：1、注射单元编码说明：L (F.I.L.O), F (F.I.F.O) 3 (3个注射油缸) R (橡胶)、P (塑料)、L (LSR) -1000 (注射量1000cm³) (注射力代号)
Note: 1. Injection Unit Code Meaning: L (F.I.L.O), F (F.I.F.O), 3 (3 Injection Cylinders) R (Rubber), P (Plastic), L (LSR) -1000 (Injection Volume 1000cm³) (Injection Pressure Code)

系列代号 Series Code	L1R-10000A	L1R-15000B	L1R-20000B	L1R-18000C	L1R-25000C	L1R-32000D	L1R-50000D	L1R-38000E	L1R-50000E	L1R-60000E	S1R-50A	S1R-170A	S1R-230A	S1R-300B	S1R-500B	S1R-630C	F1R-500	F1R-1000	F1P-70	F1P-120	F1P-200	F2P-250	F2P-370	F2P-550	F1L-40	F1L-130	F1L-250	F2L-160	F2L-200	F1R-250	F1P-170	F2P-160	F1L-190	
注射压力 Injection Pressure /bar	1260	1260	1260	1260	1260	1260	1260	2000	1520	1260	3000	1800	1580	2200	1700	1900	2300	2300	2000	2200	1800	1700	1600	1700	1400	1400	1500	1850	1400	2100	1500	2500	2200	
柱塞直径 Piston Diameter /mm	125	150	150	170	170	220	220	192	220	241	22	30	32	35	40	48	50	65																
螺杆直径 Screw Diameter /mm	65	65	65	65	65	90	90	90	90	90		30			40		40		26	35	40	43	48	53	22	35	40	35	40	30		35	35	
入料口尺寸 Size of Rubber Inlet /mm	HTV	HTV	HTV	HTV	HTV	HTV	HTV	80X35	HTV	HTV		35×21.5			50×20		50×20				TEP、TPU					LSR			HTV	TEP、TPU	TEP、TPU	LSR		

合模单元 (常用机型)

Clamping Unit of General Models

伊之密提供超过10种合模结构可满足各种制品的轻松成型与操作。

使用最新版本3D有限元仿真设计软件，配合先进的铸造工艺，为机器提供优秀的轻量化结构模板，保证机器高强度、低负载。合模结构尺寸更大，为各种取件装置预留空间。

多种合模结构拥有自主知识产权。

Yizumi provides more than 10 kinds of clamping structures with intellectual property, which can easily meet the molding and operation requirements of various products.

Applied the latest 3D finite element simulation software in designing and utilized advanced casting technology, the platen is of lightweight while excellent high-strength and low-load. Big clamping structure facilitates the arrangement of various demoulding devices.

Multiple clamping structures own independent intellectual property rights.

四柱式三步 (有向上合模 (D1) 和向下合模 (D7) 两种方式。)

There are upward closing structure (D1) and downward closing structure (D7) available for 4-column 3-step closing system.

- 结构简单，运动稳定、快捷；负载低，能耗低；
- 操作高度低；
- 密封件寿命长，液压油用量少；
- 可满足客户实现不同开模行程的要求；
- 对于制品镶件特别长，比如绝缘子，则采用向下合模方式；确保镶件在合模时保持定位固定，同时有更低的操作高度。

- Simple structure, stable and rapid movement; low load and high energy efficiency;
- Low operation height;
- Durable sealing, less hydraulic oil consumption;
- Can meet customer's requirement for different opening stroke;
- For particularly long product, such as insulators, a downward closing structure is adopted to ensure the insert positioning fixed and at the same time have a lower operating height.



D1
向上合模
D1 upward closing structure

D7
向下合模
D7 downward closing structure



D2

结构：4柱式2步向上合模；
特点：简单，可全行程增压。

Structure: 4-column 2-step upward closing
Features: Simple, full stroke clamping available.

D4

结构：C型2步向下合模结构；
特点：无立柱，操作空间大，方便选配双滑板装置或旋转工作台，实现双下模交换；向下合模方式，镶件不会移位。

Structure: C-frame 2-step downward closing;
Features: Column free structure, 3-side operation accessible, double sliding plate or rotary table available to achieve double lower mold exchange; Downward closing structure, inserts will not move.

D6

结构：4柱式2步向上合模结构，配有真空罩；
特点：避免结构复杂制品夹气，注射时无需排气动作，减少制品飞边。

Structure: 4-column 2-step upward closing with vacuum chamber;
Features: Avoid air trapping, ideal for products with complex structure, no need for venting during injection, less flash.



D3

结构：4柱式2步卧式合模结构；
特点：来自欧洲技术团队的设计理念，简单、高刚性，运动快速、负载低。

Structure: 4-column 2-step horizontal closing;
Features: Design concept from European technical team, simple, high rigidity, agile movement, low load.

D5

结构：2板2步4个水平合模油缸。
特点：来自欧洲技术团队的设计理念，模具受力均匀，保证制品尺寸精度一致，占地面积小；

Structure: 2 platens, 2-step closing with 4 clamping cylinders horizontally arranged.
Features: Design concept from European technical team; Mold with even force distribution; Consistent product size accuracy and small footprint.

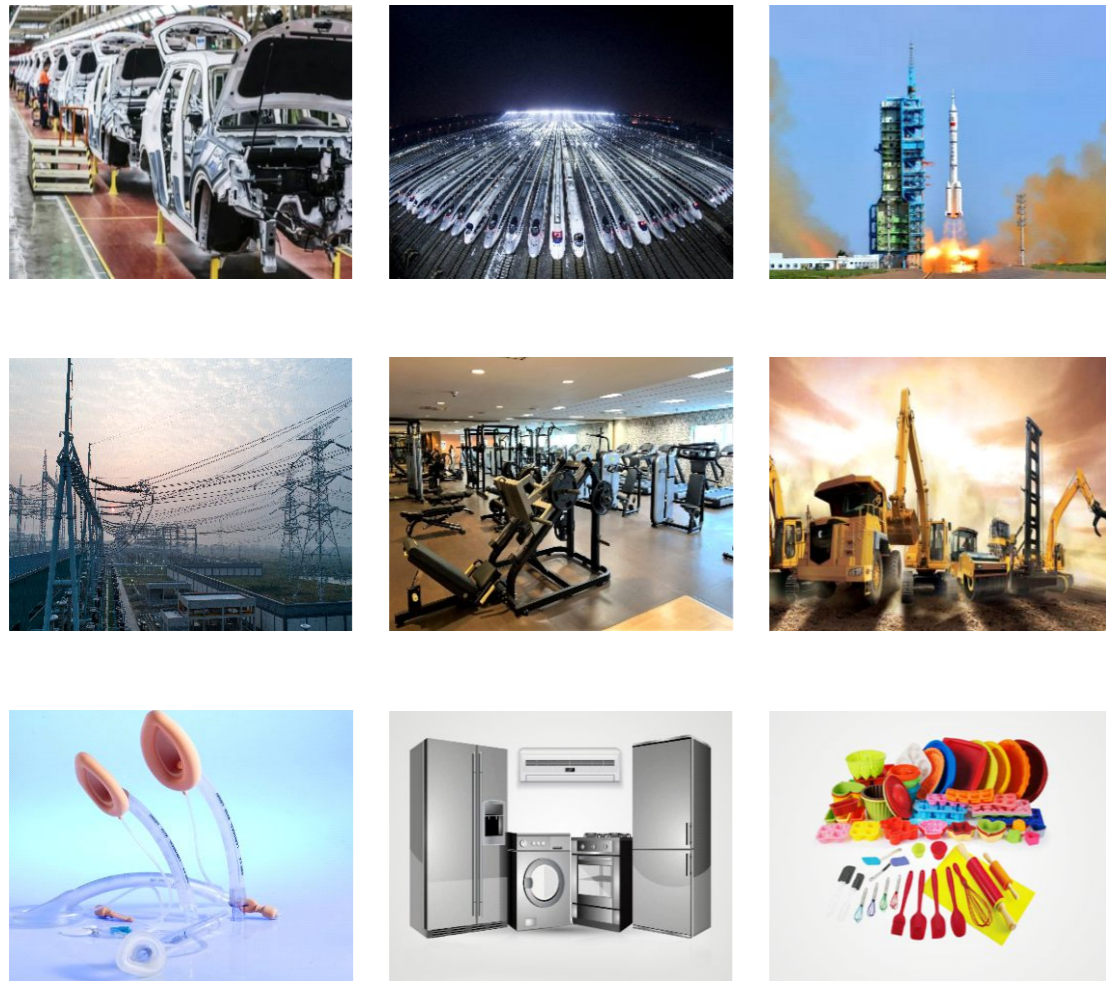
行业应用方案

Industry Applications



基于对制品成型技术的掌握，选用标准的模块进行不同组合形成大量的专业方案，其中多项方案为世界首创，这些方案经济、高效地满足多样化需求，为客户创造了理想的TCO，为行业造就典范。

Based on the know-how of product molding technology, different combinations of standard modules can be selected to form a large number of professional solutions. These solutions can meet customers' diverse needs economically and efficiently, creating an ideal TCO. Many of the solutions are the first in the world, and become the benchmark in the industry.



YIZUMI





欧标系列

对标欧洲标准、深度模块化、低成本

European Series
Benchmark European Standards, Deep Modular, Cost-Effective

YL3-VL/F第三代欧标系列注射机

是满足橡胶行业工业4.0要求的智能设备，采用全新核心技术，高精度高可靠性、具备“智能”组件。操作简单、少维护、易于管理，更全面、更精确的数据支持智能制造，协助客户轻松达成经营目标。

YL3-VL/F is the 3rd Generation European Series Injection Machine

It is an intelligent machine that meets requirements of Industry 4.0 for rubber industry. The machine uses new core technology, more precise and reliable, and has "smart" components. Simple operation, less maintenance and easy management. More comprehensive and accurate data supports intelligent manufacturing, thereby helps customers easily reach their business goals.

标准配置 Standard Configuration

- ① L3R注射单元(100T除外);
- ② 采用D1合模单元(100T、280T采用D2合模结构);
- ③ V5控制与管理系统;
- ④ 第三代能源与温度管理系统;
- ⑤ 人体工学设计;
- ⑥ CE安全标准;
- ⑦ ID卡用户管理功能;
- ⑧ 条形码扫描器功能;
- ⑨ OPC通讯功能;
- ⑩ 螺杆转速显示与控制;
- ⑪ 灵敏型比例背压控制;
- ⑫ 缺料报警功能。

- ① L3R injection unit (except for 100T)
- ② D1 clamping structure (100T and 280T adopt D2 clamping structure)
- ③ V5 control and management system
- ④ The 3rd generation energy and temperature management system
- ⑤ Ergonomic design
- ⑥ CE safety standard
- ⑦ ID card reader with different permission level
- ⑧ Bar code scanning function
- ⑨ OPC communication function
- ⑩ Screw speed display and control
- ⑪ Sensitive proportional digital back pressure control
- ⑫ Material shortage alarm function



YL3-V440L

欧标系列 European Series



V100F



V280L



V550L



V630F



V1200L

行业应用 Industry Application



产品参数 Machine Specifications

	单位/Unit	YL2-V100F	YL2-V280L/F	YL2-V440L/F
合模结构 Clamping Structure		D2	D2	D1
合模力 Clamping Force	kN	1000	2800	4400
合模行程 Closing Stroke	mm	450	500	600
热板尺寸 Heating Plate Size	mm	320x410	560x630 / 670x630 / 560x780 / 670x780	700x800 / 810x1000
热板加热功率 Heating Plate Heating Power	kW	10	17/21/22/26	28/38
标准注射单元 Standard Injection Unit	cm ³	F1R-500	L3R-2000A1	L3R-4000C1
备选注射单元 Optional Injection Unit	cm ³	F1R-1000	F1R-500 / L3R-1000A1 L3R-3000B1 / L3R-4000B1 F3R-1500B1 / F3R-3000B1	L3R-3000B1 / L3R-4000B1 / L3R-4000C2 / L3R-5000C1 L3R-6000C1 / L3R-6500D1 / L3R-8000D1 / F3R-1500B1 F3R-3000B1 / F3R-4000C1 / F3R-5000C1

YL3-V280L/F	YL2-V550/630L/F	YL2-V800/900L/F	YL2-V1200L/F
D1	D1	D1	D1
2800/3000	5500/6300	8000/9000	12000
600	700	800	850
560x630 / 670x780	810x1000 / 900x1000	1100x1350	1200x1600 / 1300x1300
17/26	38/45	65	70/70
F3R-4000C	L3R-6000C1	L3R-8000D1	L3R-8000D1
F1R-500 / L3R-1000A1 / L3R-3000B1 L3R-4000B1 / L3R-4000C1 / L3R-6000C1 F3R-1500B1 / F3R-3000B1	L3R-4000C1 / L3R-4000C2 / L3R-5000C1 / L3R-6500D1 L3R-8000D1 / L3R-8000D2 / L3R-10000D1 / F3R-4000C1 / F3R-5000C1 / F3R-10000E1	L3R-4000C1 / L3R-4000C2 / L3R-5000C1 L3R-6000C1 / L3R-6500D1 / L3R-8000D2 L3R-10000D1 / F3R-4000C1 / F3R-5000C1	L3R-4000C1 / L3R-4000C2 / L3R-5000C1 L3R-6000C1 / L3R-6500D1 / L3R-8000D2 L3R-10000D1 / F3R-4000C1 / F3R-5000C1



欧标系列

对标欧洲标准、深度模块化、低成本

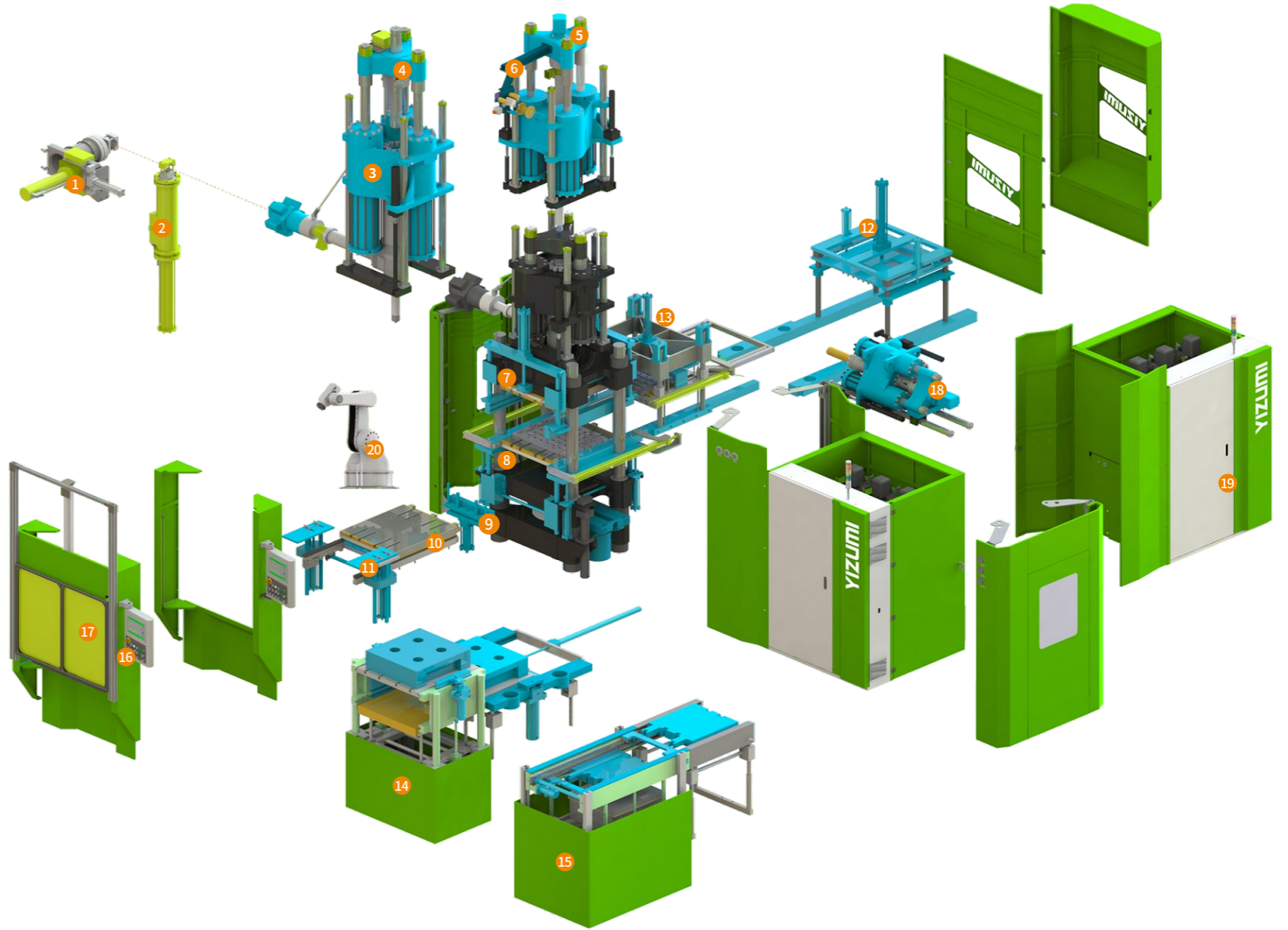
European Series
Benchmark European Standards, Deep Modular, Cost-Effective

简单选择 高度适配

Simple Choice, High Adaptability

满足欧洲主流模具安装方式与取件方式，几十项精密模块，灵活组合，一套高级软件，简单编辑，快速满足多样化需求。

Meeting the mainstream European mold installation and demolding requirements. Dozens of precise modules, flexible combination. One set of advanced software, simple editing. All these quickly meet diverse needs.



备选装置 Main Option Devices

- | | |
|----------------------------------|--|
| ① 端部开口硅胶送料装置 | ① Open gate silicone stuffer |
| ② 侧开口硅胶送料装置 | ② Side open silicone stuffer |
| ③ 注射柱塞闸板装置 | ③ Injection piston damper device |
| ④ L3R注射单元 (非标准注射量) | ④ L3R Injection unit (non-standard injection volume) |
| ⑤ F3R注射单元 | ⑤ F3R injection unit |
| ⑥ 带状胶自动送料装置 | ⑥ Strip compound feeding device |
| ⑦ 液压吊模 | ⑦ Top hydraulic mold separator |
| ⑧ 液压架模 | ⑧ Bottom hydraulic mold separator |
| ⑨ 中心顶出装置 | ⑨ Center Ejector |
| ⑩ 下移模装置 | ⑩ Lower mold sliding device |
| ⑪ 2RT | ⑪ 2RT |
| ⑫ 后面向下顶出装置 | ⑫ Rear side downward ejecting device |
| ⑬ 轴套自动顶出装置 | ⑬ Auto ejecting device for bushing |
| ⑭ 双下模或双中模分步交换装置(适合厚模具) | ⑭ Double lower or middle mold non-synchronous exchange (suitable for thick mold) |
| ⑮ 双下模或双中模同步交换装置 | ⑮ Double lower or middle mold synchronic exchange |
| ⑯ 贝加莱控制系统(10寸屏)或西门子控制系统(9寸高清显示屏) | ⑯ B&R control system with 10" touch screen or siemens control system with 9" HD screen |
| ⑰ 气动门 | ⑰ Pneumatic door |
| ⑱ F3R第二套注射单元 (双物料) | ⑱ F3R 2 nd injection unit (two compounds) |
| ⑲ 油箱后置结构 (100T、280T不适用) | ⑲ Oil tank at rear side(not for 100T and 280T) |
| ⑳ 机器人 | ⑳ Robotic system |
| ㉑ 手动双中模交换系统 | ㉑ Manual double middle mold exchange device |
| ㉒ 普通电机变量柱塞泵 | ㉒ Regular motor + variable displacement pump |

③ 注射柱塞闸板装置 Injection piston damper device

注射柱塞闸板装置: 不用拆卸螺钉即可将柱塞全部拔出, 快速清洁。
Piston can be fully pulled out for quick cleaning without removing bolts.



⑬ 轴套自动顶出装置 Auto ejecting device for bushing

适应轴套或类似制品的向下自动顶出, 制品可通过输送带运送到机器前面操作位, 方便制品的检查。
Downward automatic ejector, suitable for bushings or similar products, products can be transported to the front of machine through conveyor belt, convenient for product checking.



⑮ 双下模或双中模同步交换装置 Double lower or middle mold synchronic exchange device

同步交换模具, 外面的模具有专用的热板加热, 适合厚度小, 取件时间长的模具。
Synchronic mold exchange, outer mold has dedicated heating plate, suitable for thin mold which needs long demolding time.





卧式机系列

源自欧洲设计的合模结构

Horizontal Series
Clamping Unit Design Oriented From Europe

欧洲技术团队参与设计，机器的一致性、可靠性和速度等各方面性能按高标准执行，保证全自动化生产品质稳定；从而大幅提升生产效率并降低了人员成本。

除加工橡胶材料外，也可选配用于加工塑料、LSR、HTV的注射单元。

The European technical team is involved in the design. The machine's consistency, reliability and speed performance is according to high standards to ensure the stability of fully automated production quality; thus greatly improving production efficiency and reducing labor costs.

In addition to processing rubber materials, injection units for processing plastics, LSR, and HTV are also available.

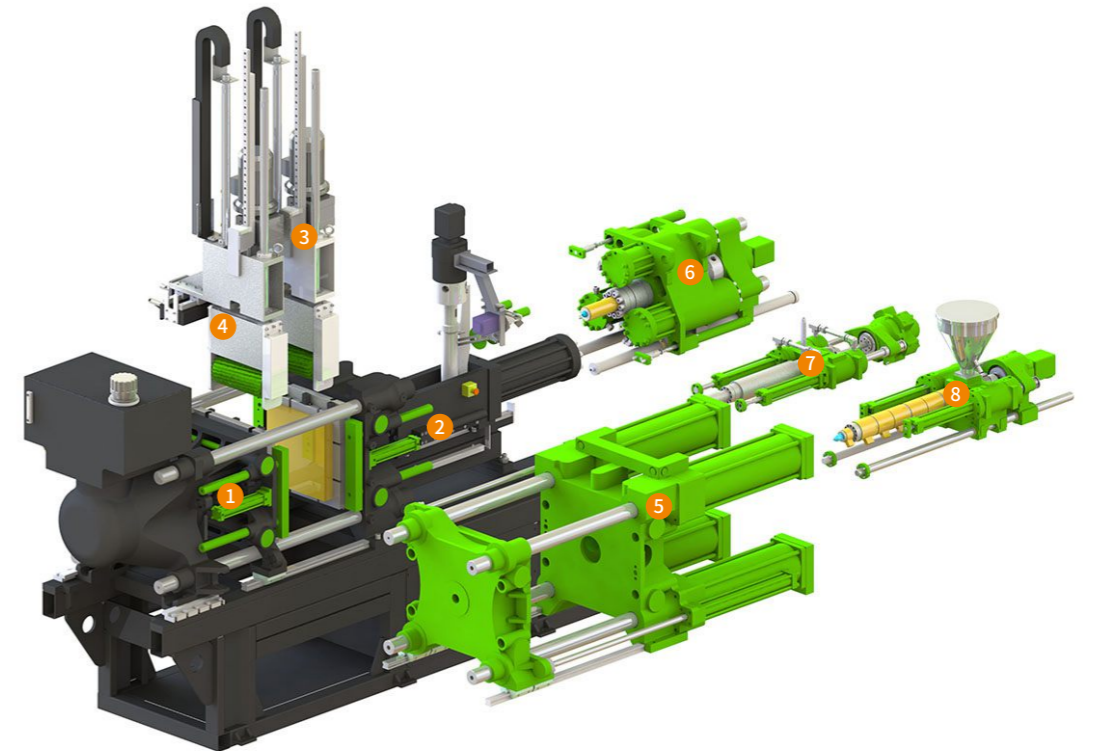
标准配置 Standard Configuration

- ① 采用D3合模单元;
- ② V5控制与管理系统;
- ③ F1R注射单元;
- ④ 螺杆转速显示与控制; 灵敏型比例背压控制; 缺料报警功能; 塑化进胶口温度控制;
- ⑤ 第三代能源与温度管理系统;
- ⑥ CE安全标准;
- ⑦ 液压中心顶装置。

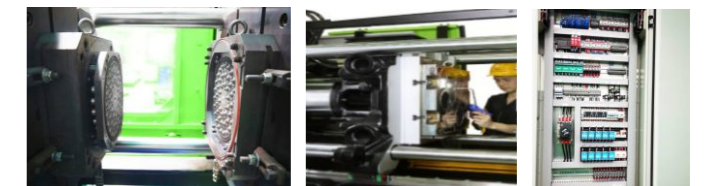
- ① Adopt D3 clamping unit
- ② V5 control and management system
- ③ F1R injection unit
- ④ Screw speed display and control, sensitive proportional digital back pressure, material shortage alarm, metering inlet temperature control
- ⑤ The 3rd generation energy and temperature management system
- ⑥ CE safety standard
- ⑦ Hydraulic center ejector



YL-H200F单缸结构 (合模采用D3)
YL-H200F single cylinder (D3 clamping unit)



YL-H200F四缸结构 (合模采用D5)
YL-H200F 4-cylinder (D5 clamping unit)



产品参数 Machine Specifications

单位/Unit	YL-H200F	YL-H300F
合模力 Clamping Force	kN 2000	3000
合模行程 Closing Stroke	mm 500	500
热板尺寸 Heating Plate Size	mm 550x550	600x600 / 650x650
标准注射单元 Standard Injection Unit	cm ³ F1R-500	F1R-1000
备选注射单元 Optional Injection Unit	cm ³ 橡胶Rubber: F1R-500 / F1R-1000 / F3R-1500 / F3R-3000 / 塑料Plastic: F1P-200 / F2P-250 / F2P-370 / F2P-500 LSR: F2L-160 / F2L-200	

备选装置 Main Option Devices

- | | | | |
|----------------|----------------------|--------------------------------------|---|
| ① 动板液压托模装置; | ⑧ F2P-塑料注射单元; | ① Movable platen hydraulic separator | ⑧ F2P-Plastic injection unit |
| ② 定板液压托模装置; | ⑨ 西门子控制系统 (9寸高清显示屏); | ② Fixed platen hydraulic separator | ⑨ Siemens control system with 9" HD screen, V4.0 control software |
| ③ 单刷子系统; | V4.0版控制软件; | ③ Single brush system | ⑩ Regular motor + Variable displacement pump energy saving hydraulic system |
| ④ 双刷子系统; | ⑩ 普通电机变量泵节能液压系统; | ④ Double brush system | ⑪ Solid silicone stuffer |
| ⑤ D5-四缸合模单元; | ⑪ 固体硅胶送料装置。 | ⑤ D5 4-cylinder clamping unit | |
| ⑥ F3R-橡胶注射单元; | | ⑥ F3R-Rubber injection unit | |
| ⑦ F2L-LSR注射单元; | | ⑦ F2L-LSR injection unit | |



C型机系列 小型高精度注射机

C-frame Series
Small Size High Precision Rubber Injection Machine

可选配高精度、小注射量的塑料、橡胶、LSR的注射单元，特别适合高精度、带镶件的小制品及汽车密封接角制品的生产。

High precision, small injection volume plastic, rubber, LSR injection units available, especially suitable for the production of small precise parts with inserts and profile jointing.

标准配置 Standard Configuration

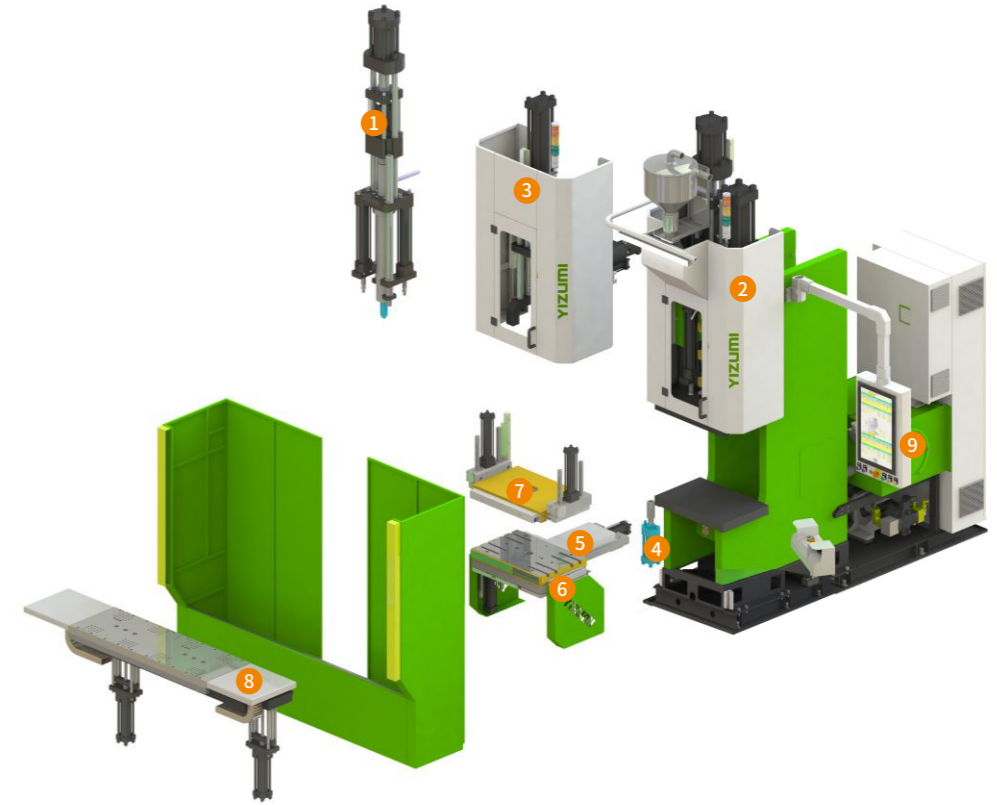
- ① 贝加莱控制系统 (10寸屏幕);
 - ② 螺杆转速显示与控制;
 - ③ 灵敏型比例背压控制;
 - ④ 缺料报警功能;
 - ⑤ CE安全标准;
 - ⑥ 第三代能源与温度管理系统;
 - ⑦ D4合模结构。
- ① B & R control system with 10" screen
 - ② Screw speed display and control
 - ③ Sensitive proportional digital back pressure control
 - ④ Material shortage alarm
 - ⑤ CE safety standard
 - ⑥ The 3rd generation energy and temperature management system
 - ⑦ D4 clamping structure



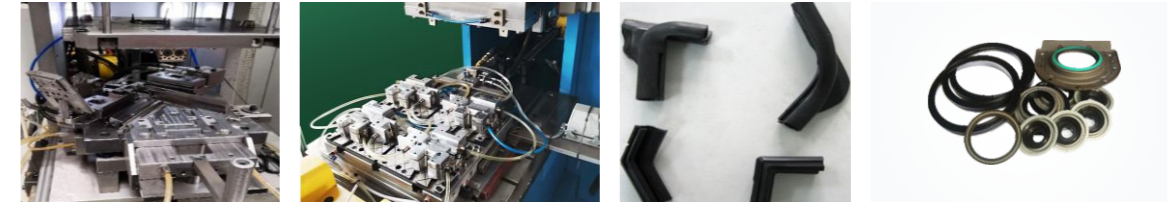
YL-C50L



YL-C50F



行业应用 Industry Application



产品参数 Machine Specifications

	单位/Unit	YL-C30L/F	YL-C40L/F	YL-C50L/F	YL-C80L/F	YL-C100L/F	YL-C160L/F
合模力 Clamping Force	kN	300	400	500	800	1000	1600
合模行程 Closing Stroke	mm	460	460	460	460	460	460
模板尺寸(宽x长) Platen size (width x length)	mm	500x400 / 600x400			600x400 / 700x500		800x700
最小模厚(橡胶) Min. Mold Height (rubber)	mm	170	190	190	310	310	
最小模厚(塑料、LSR) Min. Mold Height (plastic)	mm	250	270	270	390	390	
备选注射单元 Optional Injection Unit	cm ³	橡胶Rubber: S1R-50A / S1R-170A / S1R-230A / S1R-300B 塑料Plastic: F1P-120B / F1P-170B LSR: F1L-90 / F1L-250			橡胶Rubber: S1R-230A / S1R-300B / S1R-500B / S1R-630C 塑料Plastic: F1P-120B / F1P-170B / F2P-550D LSR: F1L-190 / F1L-250		

备选装置 Main Option Devices

- ① F1L—LSR注射单元
- ② F1P—塑料注射单元
- ③ S1R—橡胶注射单元
- ④ 中心顶出装置
- ⑤ 移模装置
- ⑥ 下液压托模装置
- ⑦ 上液压吊模装置
- ⑧ 双下模左右交换装置
- ⑨ 贝加莱控制系统 (21.5寸屏幕)
- ⑩ 闭环伺服阀控制注射精度
- ⑪ 液压油预热功能
- ⑫ F1L-LSR injection unit
- ⑬ F1P- Plastic injection unit
- ⑭ S1R- Rubber injection unit
- ⑮ Center ejector
- ⑯ Sliding device
- ⑰ Bottom hydraulic mold separator
- ⑱ Top hydraulic mold separator
- ⑲ Double lower mold exchange system(left-right)
- ⑳ B&R control system with 21.5"touch screen
- ㉑ Closed-loop servo valve controls injection accuracy
- ㉒ Preheating function of hydraulic oil



亚标系列

全球橡胶注射机行业率先深度应用模块化

Asian Series
In-depth Modular Design Application in Rubber Injection Machine Industry

YL2-VL/F亚标系列注射机

遵循亚洲企业模具设计方式的高床型结构，采用先进设计理念与手段，结合先进的加工工艺，适用广泛，高性价比，低成本满足全球不同行业客户需求。

YL2-VL/F Asian Series Injection Machine

The high bed structure compatible with typical Asian mold design. With advanced design concept, advanced processing technology, the Asian series is widely applicable and cost-effective. It can meet the needs of customers in different industries with low investment and excellent performance.

标准配置 Standard Configuration

- ① 西门子控制系统 (10寸触摸高清屏); V4.0操作系列;
- ② L3L/F注射单元;
- ③ D3合模单元 (600T采用D1);
- ④ 一线品牌液压泵、方向阀、密封件;
- ⑤ GB安全标准。

备注: 200T、300T、600T油箱右置, 250T、350T、450T油箱后置。

- ① Siemens control system with 10" HD touch screen, V4.0 control software
- ② L3L/F injection unit
- ③ D3 clamping structure (D1 for 600 T)
- ④ Top brand hydraulic pump, directional valve, seal
- ⑤ China GB safety standard

Note:
200T, 300T and 600T with oil tank on the right side
250T, 350T and 450T with oil tank at the rear side



YL2-V300L

亚标系列 Asian Series



YL2-V300F



YL2-V200L带硅胶送料桶 (with silicone stuffer)



YL2-V250L



YL2-V450L

行业应用 Industry Application



产品参数 Machine Specifications

	单位/Unit	YL2-V200L/F	YL2-V250L/F	YL2-V300L/F	YL2-V350L/F
合模结构 Clamping Structure		D2	D2	D2	D2
合模力 Clamping Force	kN	2000	2500	3000	3500
合模行程 Closing Stroke	mm	480	480	500	500
热板尺寸 Heating Plate Size	mm	550x550 / 550x650 / 550x750 / 600x650 / 600x750		600x650 / 600x800 / 650x650 / 650x750 / 700x750	
热板加热功率 Heating Plate Heating Power	kW	14 14 18 16 18		16 20 18 20 22	
标准注射单元 Standard Injection Unit	cm ³	L3R-2000A1		L3R-3000B1	
备选注射单元 Optional Injection Unit	cm ³	L3R-1000A1 / L3R-3000B1 F3R-1500B1 / F3R-3000B1		L3R-1000A1 / L3R-2000A1 / L3R-4000B1 / L3R-4000C2 L3R-5000C1 / L3R-6000C1 / F3R-1500B1 / F3R-3000B1	

	YL2-V450L/F	YL2-V600L/F
	D2	D1
	4500	6000
	600	700
	700x800 / 700x1000 / 810x900 / 810x1100	750x850 / 850x850 / 900x1000 / 900x1100
	28 34 34 40	30 34 42 48
	L3R-4000B1	L3R-6000C1
	L3R-3000B1 / L3R-4000C1 / L3R-4000C2 / L3R-5000C1 / L3R-6000C1 L3R-6500D1 / L3R-8000D1 / F3R-1500B1 / F3R-3000B1 / F3R-4000C1 / F3R-5000C1	L3R-4000C1 / L3R-4000C2 / L3R-5000C1 / L3R-6500D1 / L3R-8000D1 L3R-8000D2 / L3R-10000D1 / F3R-4000C1 / F3R-5000C1



亚标系列

全球橡胶注射机行业率先深度应用模块化

Asian Series
In-depth Modular Design Application in Rubber Injection Machine Industry

标准模块化 灵活多样化

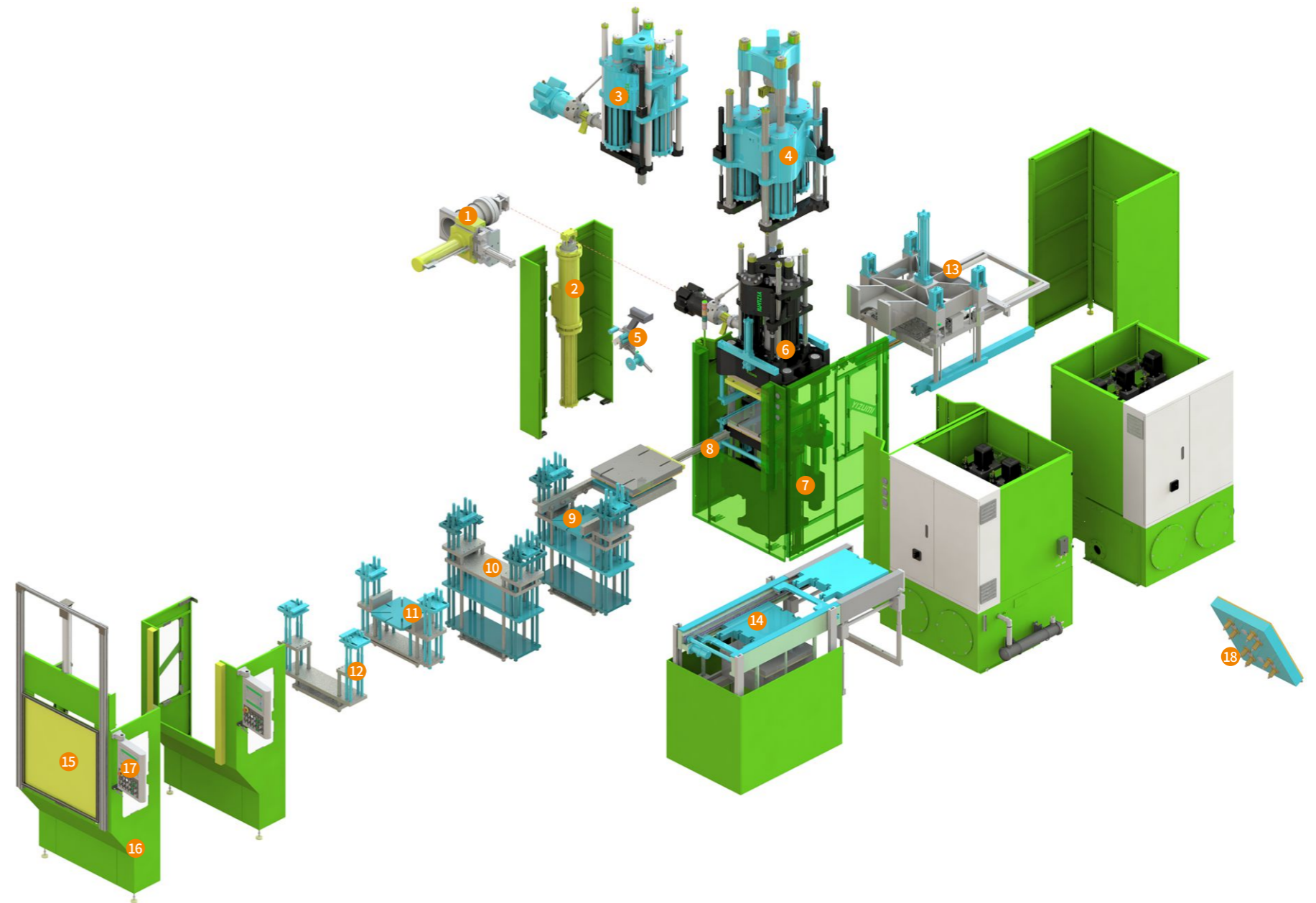
Standard Modular, Flexible Solutions

以配合亚洲主流模具取件方式，高床型合模结构、更大的导柱间距，方便各种复杂的模外取件装置及其它备选功能灵活组合，快速、低成本满足全球不同行业客户需求。

In order to match with the mainstream Asian demolding requirements, we adopt high-bed clamping structure with larger column spacing to facilitate the flexible combination of various complex demolding devices and other optional functions. It can satisfy the needs of customers in different industries worldwide for high efficiency while low investment.

备选装置 Main Option Devices

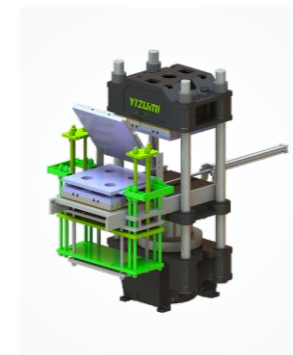
- | | |
|-----------------------------|---|
| ① 端部开口硅胶送料装置 | ① Open gate silicone stuffer |
| ② 侧开口硅胶送料装置 | ② Side open silicone stuffer |
| ③ L3R注射单元 (非标注射量) | ③ L3R injection unit(non-standard injection volume) |
| ④ F3R注射单元 (F.I.F.O) | ④ F3R injection unit (F.I.F.O) |
| ⑤ 带状胶自动送料装置 | ⑤ Strip compound feeding device |
| ⑥ 液压吊模 | ⑥ Top hydraulic mold separator |
| ⑦ 液压架模 | ⑦ Bottom hydraulic mold separator |
| ⑧ 下移模装置 | ⑧ Lower mold sliding device |
| ⑨ 4RT | ⑨ 4RT |
| ⑩ 3RT双托 | ⑩ 3RT double lifter |
| ⑪ 3RT单顶单托 | ⑪ 3RT with one ejector and one lifter |
| ⑫ 2RT | ⑫ 2RT |
| ⑬ 向下顶出装置 | ⑬ Downward ejecting device |
| ⑭ 双下模或双中模同步交换装置 (适合薄模具) | ⑭ Double lower/middle mold synchronic exchange (suitable for thin mold) |
| ⑮ 气动门 | ⑮ Pneumatic door |
| ⑯ 西门子控制系统 (9寸触摸屏) | ⑯ Siemens control system with 9" touch screen |
| ⑰ 贝加莱控制系统 (21寸屏), V5操作与管理系统 | ⑰ B & R control system with 21" screen, V5 control and management system |
| ⑱ CRB | ⑱ CRB |
| ⑲ 第三代伺服节能泵 | ⑲ The 3 rd generation servo energy saving pump |
| ⑳ 夹板 | ⑳ Mold plate clipping device |
| ㉑ 模内顶出装置 | ㉑ Ejecting device in clamping area |
| ㉒ 机械架模 | ㉒ Bottom mechanical mold separator |
| ㉓ 机械吊模 | ㉓ Top mechanical mold separator |
| ㉔ 翻模装置 | ㉔ Mold tilting device |
| ㉕ 侧抽芯装置 | ㉕ Side core puller |
| ㉖ 双下模或双中模分步交换装置 (适合厚模具) | ㉖ Double lower or middle mold non-synchronic exchange (suitable for thick mold) |
| ㉗ 手动双中模交换系统 | ㉗ Manual double middle mold exchange device |



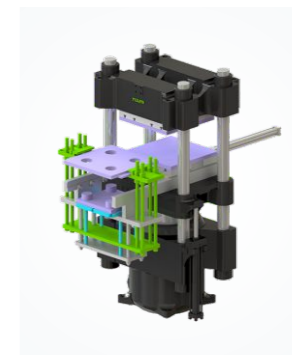
⑨ 4RT+翻模
4RT + mold tilting device



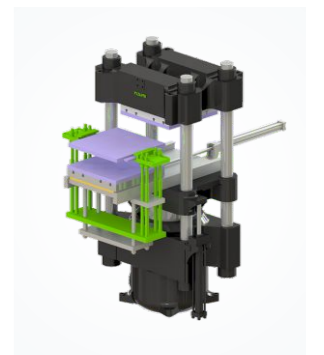
⑩ 3RT双托+翻模
3RT double lifter + mold tilting device



⑪ 3RT单顶单托
3RT one lifter + one ejector



⑫ 2RT





特殊机型

为客户量身订做特殊解决方案

Special Machines Series
Tailor-made Solutions for Customers

抽真空注射机 Vacuum Chamber Injection Machine

- 适合对存在夹气、排气困难、不可采用排气动作的各类制品成型;
- 真空度快速达成, 可精准设定、显示、控制;
- 没有排气动作, 飞边少, 便于实现全自动。
- It is suitable for molding all kinds of products which have air entrapment problem or venting difficulty or venting not allowed
- Vacuum can be quickly achieved; accurate setting, display and control
- No venting movement, less flash, can realize automatic production



YL-VV350L



YL-VV450F (双物料注射机)
(Dual-material injection machine)



超大注射量注射机 Injection Machine with Large Injection Volume

- 适合超大注射量的制品成型;
- 塑化效率高、塑化温度控制精准, 不易焦烧, 可满足对温度敏感的大橡胶制品成型;
- 是EPDM材料中压、高压、特高压电缆附件成型的最佳设备。
- Suitable for molding products with large injection volume
- High plasticizing efficiency, accurate plasticizing temperature control, no scorching, large part with temperature-sensitive rubber can be easily molded
- Ideal machine for molding medium voltage, high voltage and extra-high voltage cable accessories with EPDM material



YL2-V300L (注射量6000cm³,注射压力1900bar)
(Injection volume 6000cm³, injection pressure 1900bar)



YL2-AB630F (注射量10000cm³,注射压力1700bar)
(Injection volume 10000cm³, injection pressure 1700bar)



YL2-AB1200L (注射量40000cm³,注射压力1900bar)
(Injection volume 40000cm³, Injection pressure 1900bar)



平板机系列

橡胶制品简易成型方案

Compression Press Series
Simple Molding Solution For Rubber Parts

- 整机低能耗设计，高强度环保隔热板；
- 热板移出，模具全程温度保持；
- 更快的运行速度；
- 西门子控制系统；
- 国际名牌电气、液压、密封元件。
- Low energy consumption design, high strength environmental friendly insulation plate
- Mold temperature maintained while heating plate sliding out
- Faster running speed
- Siemens control system
- International well-known electrical, hydraulic and sealing components



YL-V350



YL-VV350



YL-VV450 侧立板合模结构
YL-VV450 vertical side plate clamping structure



YL-V1000 侧立板合模结构
YL-V1000 vertical side plate clamping structure

备选装置 Main Option Devices



1 夹板 + 下移模
Clipping device + lower mold sliding device



2 2RT + 翻模
2RT + tilting device



3 3RT双托 + 翻模
3RT double lifter + tilting device



4 4RT + 翻模
4RT + tilting device

产品参数 Machine Specifications

	单位/Unit	YL-V200	YL-V250	YL-V350	YL-V1000	YL-VV200	YL-VV250	YL-VV350	YL-VV450
合模力 Clamping Force	kN	2000	2500	3500	10000	2000	2500	3500	4500
合模行程 Closing Stroke	mm	250	250	250	660	250	250	250	870
热板间距 Heating Plate Daylight	mm	300	300	300	800	300	300	300	950
热板尺寸 Heating Plate Size	mm	550x550	650x650	750x750	1070x1070	500x500	600x600	650x650/700x700	810x810
总功率 Total Power	kW	42.2	53.6	58.4	57	45.5	54.5	58.2/60.0	128

行业应用 Industry Application





电力行业专用机

引领全球复合绝缘产品生产新技术

Specialized Molding Machine for Energy Industry
Global Leader of Composite Insulation Product Molding Technology

电力行业绝缘产品成型专用机

Insulation Product Molding Machine for Energy Industry

基于长期与行业专家、客户、模具商、材料商的密切探讨，我们深度懂得各种产品、操作者和管理者的需求，从10kV到1000kV的各种类型、各种电压等级产品的解决方案都遥遥领先，为全球客户创造了最佳TCO，因此YIZUMI在全球得到的订单也遥遥领先。

Based on long-term close discussions with industry experts, customers, mold makers and material suppliers, we deeply understand features of various products, the needs of operators and managers, and provide leading solutions for various types and voltage products from 10kV to 1000kV. We create the best TCO for global customers, in return, we win orders globally far ahead of other manufacturers.

- 拥有多项自主知识产权;
 - 硅橡胶专用塑化注射单元，完全解决塑化夹气与焦烧;
 - 安全、轻松的硅胶送料装置;
 - 高刚性的合模装置，即使模具很长，两端产品的飞边可以很小;
 - 针对不同制品有5种合模结构可选择，以实现最佳成型方案与生产效率;
 - 标配高执行速度的西门子控制系统（4-10MS），10寸触摸屏；一线品牌液压元件;
 - 低能耗设计;
 - 操作方便，人机友好。
- With ownership of multiple independent intellectual property rights
 - Special plasticizing and injection unit for silicone, perfectly avoid air trapping and compound scorch
 - Safe and easy silicone stuffer
 - High rigidity clamping unit, less flash at two sides even if the mold is very long
 - Five clamping structures available for realizing the best molding solution and the highest production efficiency
 - Siemens control system (4-10MS) with high execution speed, standard 10" screen; top brand hydraulic components
 - Low energy consumption
 - Easy to operate and user-friendly



制品名称: 10kV互感器
成型腔数: 一出二
Part Name: 10 kV Transformer
Number of Cavities: 1



制品名称: 11kV复合绝缘子
成型腔数: 一出二十四
Part Name: 11 kV Composite Insulator
Number of Cavities: 24



制品名称: 38kV避雷器
成型腔数: 一出八
Part Name: 38 kV Arrester
Number of Cavities: 8



制品名称: 220kV管套
成型腔数: 一出二
Part Name: 220 kV Hollow Core Insulator
Number of Cavities: 1



制品名称: 110kV锥形管套
成型腔数: 一出二
Part Name: 110kV Cone Type Hollow Core Insulator
Number of Cavities: 1



制品名称: 500kV高压复合绝缘子
成型腔数: 一出二
Part Name: 500 kV HV Composite Insulator
Number of Cavities: 2



制品名称: 20kV复合横担
成型腔数: 一出四
Part Name: 20kV Composite Crossarm
Number of Cavities: 4



制品名称: 110kV避雷器
成型腔数: 一出二
Part Name: 110kV Arrester
Number of Cavities: 1



制品名称: 11kV熔断器
成型腔数: 一出十六
Part Name: 11kV Cut-out
Number of Cavities: 16



制品名称: 10kV T型接头
成型腔数: 一出八
Part Name: 10kV T Joint
Number of Cavities: 8



电力行业专用机

引领全球复合绝缘产品生产新技术

Specialized Molding Machine for Energy Industry
Global Leader of Composite Insulation Product Molding Technology



- YL2-ABL系列采用D1向上合模结构，是相对比较经济的机型；
- YL2-ATL系列采用D7向下合模结构，对需要多次成型的制品有更多优势；同时，送料装置安装在地面，将胶料向下轻松投放即可；
- YL-H1000F是特高压空心套管最佳成型设备，可高效率生产没有气泡、飞边、缺料等缺陷的制品，因采用低压注射成型技术，对环氧管的保护也是最好的。它的操作便捷性、生产效率与产品质量堪称完美；
- YL2-V360L主要用于生产中低压绝缘子、避雷器等种类绝缘制品。
- YL2-ABL series adopts D1 upward clamping structure, which is relatively cost-effective.
- YL2-ATL series adopts D7 downward mold closing structure, which has more advantages for products that need multiple-step molding; at the same time, silicone stuffer is installed on the ground level, silicone block can be easily dropped inside.
- YL-H1000F is terrific for molding UHV hollow core insulator. It can efficiently produce hollow core insulators free of defects such as air bubble, heavy flash, non-filling. It adopts low pressure injection molding technology to protect FRP tubes. Its ease of operation, production efficiency and product quality are perfect.
- YL2-V360L is mainly used to produce low and medium voltage insulators, arresters and other types of insulation products.



YL2-ABL



YL2-ATL



YL-H1000F



YL2-AT1800L



YL2-V360L



YL2-AT1100L



YL2-AB900L



YL-C80I

产品参数 Machine Specifications

	单位/Unit	YL2-V360L	YL2-AB500/550L	YL2-AB650L
合模结构 Clamping Structure		D2	D1	D1
合模力 Clamping Force	kN	3600	5000/5500	6500
合模行程 Closing Stroke	mm	500	600	700
热板尺寸 Heating Plate Size	mm	630x1300	630x1500	800x1700
热板加热功率 Heating Plate Heating Power	kW	33	36/44	53/60
标准注射单元 Standard Injection Unit	cm ³	L3R-4000B2	L1R-10000A	L1R-15000B
备选注射单元 Optional Injection Unit	cm ³	L3R-5000B2	L1R-15000B / L1R-20000B L1R-25000C	L1R-20000B L1R-25000C

	YL2-AB900L	YL2-AT550L	YL2-AT660L	YL2-AT880L	YL2-AT1100L	YL2-AT1800L
D1 (双缸 2-cylinder)	D7	D7	D7	D7 (双缸 2-cylinder)	D7 (双缸 2-cylinder)	
4500x2	5500	6600	8800	5500x2	8800x2	
600	700	800	1200	700	1200	
850x2000	630x1500	650x1600	800x1600	800x2600	1000x2600	
82	36/44	45	55	80	120	
L1R-15000B	L1R-15000B	L1R-18000C	L1R-25000C	L1R-25000C	L1R-50000D	
L1R-20000B L1R-25000C			L1R-32000D	L1R-32000D	L1R-50000E L1R-60000E	



LSR电缆附件成型专用机

全规格产品最佳成型方案

LSR Cable Accessories Clamping Molding Machine
Full Range of Optimal Molding Solutions

- 根据制品成型要求有卧式和立式结构;
- 合模力可随时间变化多级闭环控制;
- 卧式合模单元具有自主知识产权。
- Both horizontal and vertical structure available for different products
- Clamping force can be controlled in multiple stages according to time
- With ownership of independent intellectual property rights in the respect of horizontal clamping unit



YL-H160/YL-H250



YL-V360



YL-V300



YL-V100

行业应用 Industry Application



空气弹簧成型专用机

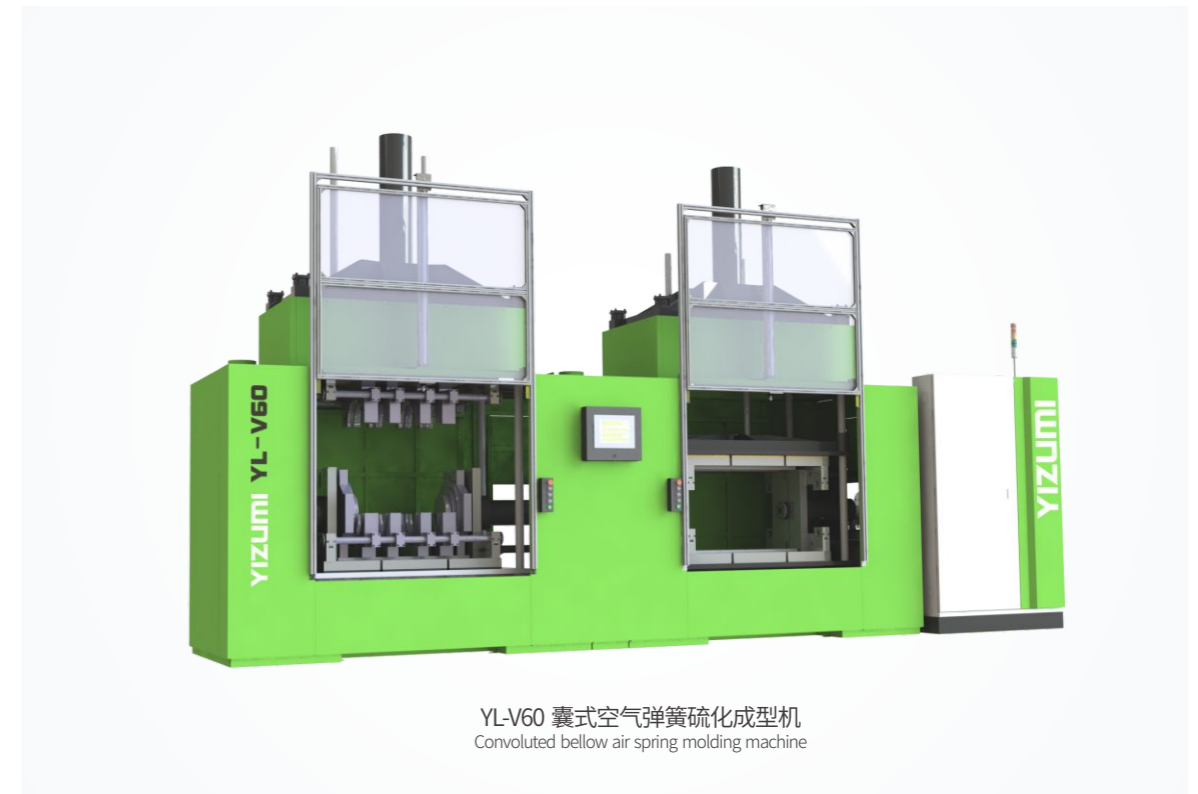
符合欧洲工艺与性能需求

Air Spring Molding Machine
Meet European Process and Performance Requirements

- 符合欧洲空气弹簧先进成型工艺与性能要求
- 自主知识产权，四柱式锁模结构，两步向下合模方式
- 自编程序，用户可根据需求自由编制工艺流程
- In line with the advanced molding process and performance requirement of European air spring
- With ownership of independent intellectual property rights in the respect of four tie-bar, two-step downward closing clamping structure
- Self-programming, users can freely edit the production process according to their needs



YL-V50 膜式空气弹簧硫化成型机
Rolling lobe air spring molding machine



YL-V60 囊式空气弹簧硫化成型机
Convoluted bellow air spring molding machine



无接头橡胶履带成型专用机

全球前列 技术领先

Joint-free Rubber Track Molding Machine
Worldwide First, Advanced Technology

- 同一机台可满足一段和二硫化，便于生产安排及节省模具费用；
 - 适用于农用履带和工程履带生产；
 - 闭环控制动态张紧功能，同时闭环控制张紧力与位置，钢带不会出现喇叭口状态；
 - 骨架与胶料放置方便、准确；
 - 特制的小车轻松取件，方便检查、修整、翻转及转移等工作；
 - 多油泵控制系统，周期时间短。
- 1st stage & 2nd stage molding can be done in one machine, easy for production planning and less mold cost
 - Suitable for agricultural track and engineering track production
 - Closed-loop control of dynamic tensioning function, and closed-loop control of tensioning force and position, the steel belt will not appear trumpet state
 - Convenient for accurate placement of insert and rubber
 - Specially-made trolley easy for demolding, convenient for inspection, trimming, turning and transferring
 - Multiple hydraulic pumps, short cycle time



产品参数 Machine Specifications

	单位/Unit	YL-E200	YL-E360	YL-E520
锁模力 Clamping Force	Ton	200	360	520
热板尺寸 Heating Plate Dimension	mm	1350x500/900x500	1630x640/1430x640	2060x750/1750x750
开模行程 Mould Open Stroke	mm	450	450	460
热板间距 Distance Between Heating Plates	mm	520/550	550/550	560/580
最小模厚 Min.Mould Thickness	mm	110	120	120
履带最大宽度 Max.Width of Track	mm	150-300	300-500	350-600
硫化履带规格(长度) Range of Track	mm	2500-3800	4140-5040	4770-6670
系统压力 System Pressure	bar	200	200	200



金刚石绳锯成型专用机

为全球行业量身定做最佳解决方案

Diamond Wire Saw Molding Machine
Tailor-made Solutions for Global Industry

- 专业的橡胶成型全套技术；
- 适合开环橡胶绳锯的成型；
- 高的注射压力，确保钻石串珠与钢丝绳之间的粘接；
- 一模可以成型多穴，生产效率高；
- 采用西门子控制系统、德国品牌变量泵；
- 采用D2向上合模结构，L3R注射装置机固定在上方，开模行程480mm时仍然保持整机的平稳。
- Professional molding technologies
- Ideal for molding rubber wire saw without end connection
- High injection pressure, secure the bonding between diamond beads and steel wires
- Applicable for multi-cavity mold, high production efficiency
- Siemens control system, German variable pump
- Adopt D2 upward clamping structure, with L3R injection unit fixed on the top, the machine can run stably at opening stroke 480mm



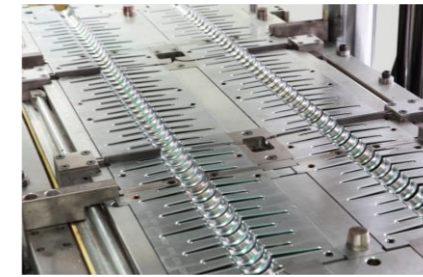
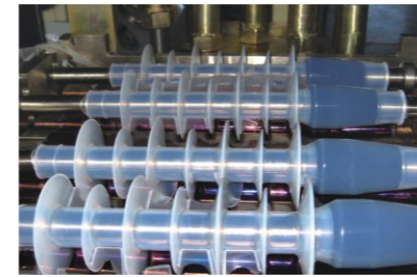
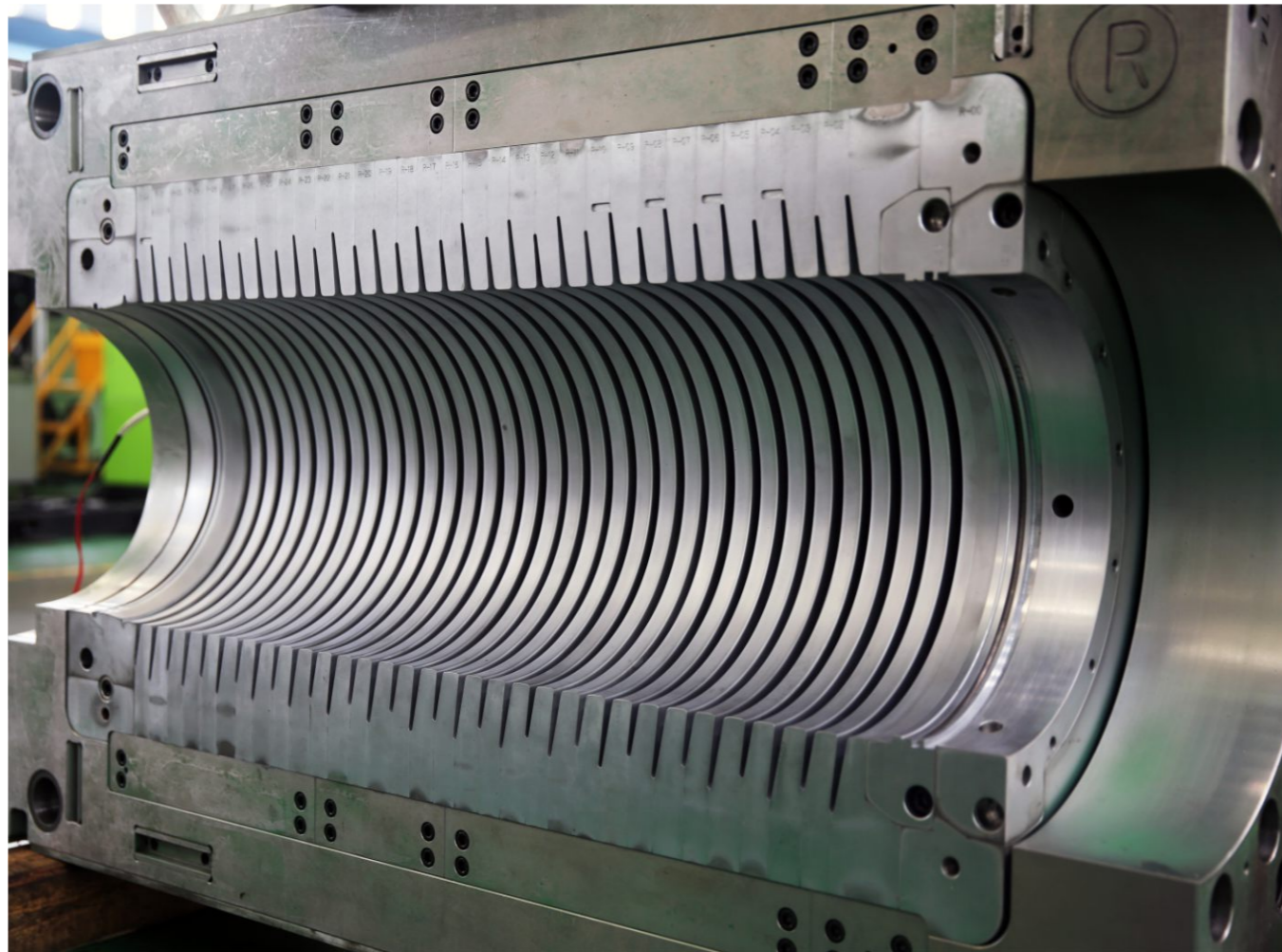
- 特殊设计的向下合模结构，成型模腔在立柱外侧仍然受力均匀，特别适合闭环的TPU等塑料金刚石绳锯的成型；
- 更大的合模压力配合更高注射压力，确保钻石串珠与钢丝绳粘接稳固；
- 采用立式注塑机专业控制系统和伺服电机泵，控制精度高，能耗低，噪音小；
- 多项辅机接口，功能齐全。
- Especially designed downward clamping structure, the molding cavities distribute at the external side of tie bar with uniform force, ideal for molding circular TPU diamond wire saw
- Bigger clamping force for higher injection pressure, ensure better bonding between diamond beads and steel wires
- Using the control system and servo motor pump from vertical injection molding machine, high control accuracy, low energy consumption and low noise
- Multiple auxiliary equipment interface, well-equipped functions



模具

Molds

伊之密拥有专业技术过硬的团队，提供注射模具方案，冷流道及模具方案。
Yizumi has an elite technical team to provide injection mold solutions, cold runner and mold solutions.



YFO服务标准

YIZUMI Factory Outlet Service

YFO即YIZUMI Factory Outlet 工厂直营店，直营店模式确保服务的高响应度和可控性，让客户获得更好的服务体验。

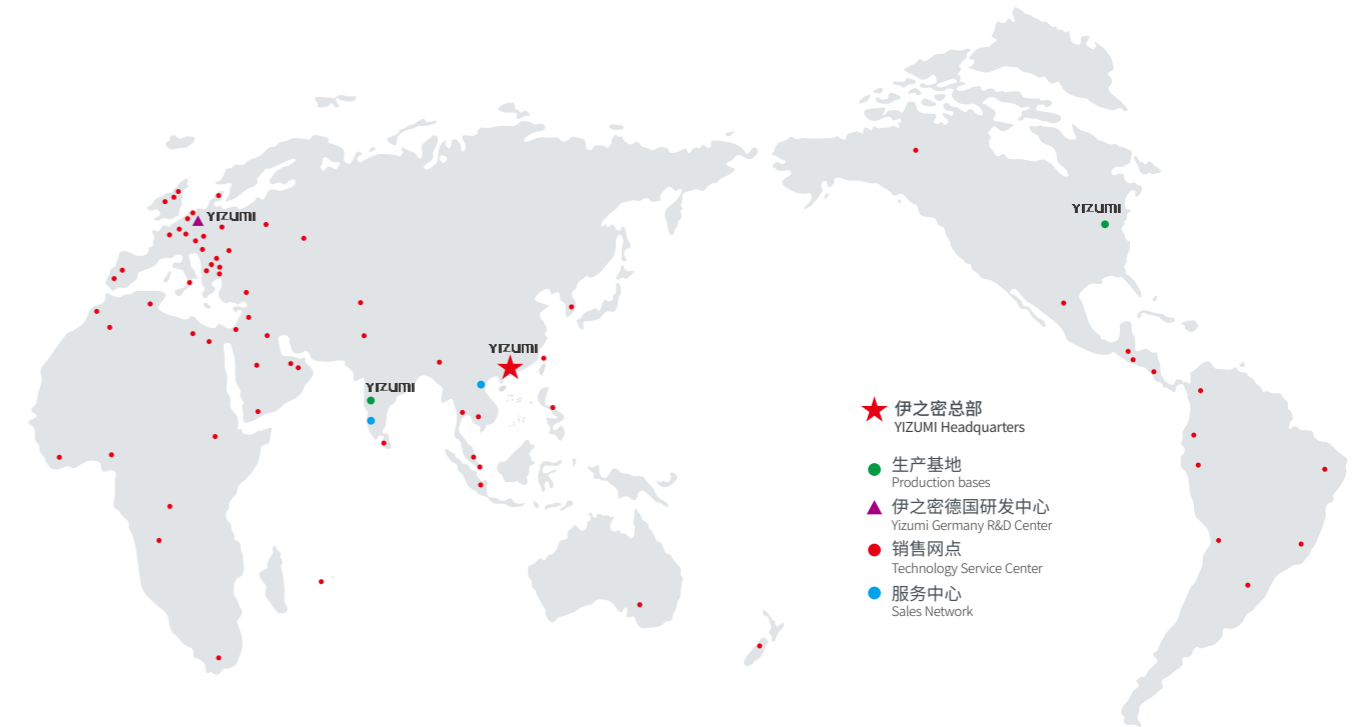
YFO (Yizumi Factory Outlet) model ensures quick response and controllability of the service and it is also Yizumi's new global service strategy for the future. As regards the service concept, we not only ensure the safety of customer's production activity, but also endeavor to fulfill the ultimate goal of reducing the risk of downtime through every detail and improving customer's productivity.



YFO服务六大专享体验

YFO Service Experience

<p>电话回访 Call Review</p> <p>建立客户档案，通过回访机制提供咨询和指导服务； Establish customer files and provide consulting and guidance services through the return visit mechanism.</p>	<p>上门巡检 On Site Checking</p> <p>服务工程师定期上门检查机器状况，提供预防性维护； Service engineer will check the machine regularly and provide preventive maintenance.</p>	<p>配件服务 Spare Parts</p> <p>我们为客户提供便捷的配件供应网络，确保配件畅通、及时、准确交付； We provide customers with a convenient spare parts supply network to ensure the smooth, timely and accurate delivery of spare parts.</p>
<p>培训 Training</p> <p>对专业人员和客户开展针对性培训； Carry out targeted training for professionals and customers.</p>	<p>评级认证 Rating Evaluation</p> <p>我们对YFO服务工程师进行服务评级认证，严格规范服务标准； We conduct service rating certification for YFO service engineers and strictly regulate service standards.</p>	<p>全天候服务 24hrs Service</p> <p>365天、24小时专属热线，维修专家时刻回应您的需求。 365 days, 24 hours exclusive hotline, with maintenance experts responding to your needs.</p>



遍布全球的服务网点和配件中心

Service Networks and Spare Parts Center Worldwide

<p>246</p> <p>YFO服务网络遍布中国96个城市地区和海外150个服务中心。 YFO service network covers 96 cities in China and 150 out of China.</p>	<p>6,000m²</p> <p>覆盖中国96个城市仓储点和海外23个配件中心。 Spare parts stores across 96 cities in China and 23 out of China.</p>	<p>96%</p> <p>本部零件当天出库率≥96%。 Parts same-day delivery rate at headquarters ≥96%.</p>
---	---	--

