

CRAFT

Technology, products, process,
service and brand.

Five dimensionalities to be
a world-class molding
equipment solution provider.

The YIZUMI Magazine for Customers

VOL.30 ▶ 2025

P01 YIZUMI NEWS

YIZUMI Forecast 5B CNY Revenue in 2024,
Global Capacity Expands

P13 LEADER INTERVIEWS

James Zhang:
Tech and Ecosystem: Dual-Driven
for Globalization

THINK TECH FORWARD



Intelligent
and Efficient



Global
Operation



Green
Development

P19 **Smart Life
Green Future**

YIZUMI Open Week (Sustainable Packaging Solutions)
An opportunity to explore green packaging and smart manufacturing solutions

CONTENTS

First Issue, 2025
 For internal distribution only
 General Advisers: James Zhang, Wang Shihai
 Chief Editor: Sabrina Zhao
 Associate Editors: Zhou Manru, Luo Ruojing
 Text and Cover Design, and Electronic Page Makeup: Tan Guohui
 Technical Advisers: Li Donghai, Jiang Xiaojun, Li Baojian, Hou Yongping,
 Li Binli, Jin Hui, Zhang YanFei

Published by the Craft Editorial Dept.
 Yizumi Holdings Co., Ltd.
 Address: No.22, Keyuan 3 Road, High-tech Zone, Ronggui,
 Shunde, Foshan City, Guangdong Province, China, 528306
 Phone: +86-757-2926 2000 Fax: +86-757-2926 2266
 Website: www.yizumi.com
 E-mail: luoruoqing@yizumi.com

Disclaimer: All material is accepted on the understanding that it is copyright free. Craft accepts no liability for any subsequent copyright issues.

YIZUMI NEWS	YIZUMI Forecast 5B CNY Revenue in 2024, Global Capacity Expands YIZUMI Awarded A-Grade Reliability Certificate, a Sector First YIZUMI Breaks New Ground: Unveiling Its Global Headquarters YIZUMI New East China Base: New Heights in Smart Manufacturing YIZUMI and KUKA Team Up for Smart Manufacturing in KUKA Open Day YIZUMI & WANHUA: Achievement for PU In-Mold Painting Technology	01-12
LEADER INTERVIEWS	James Zhang: Tech and Ecosystem: Dual-Driven for Globalization	13-16
NEW PRODUCT	YIZUMI 7K Injection Molding Machine: Breakthrough and Innovation	17-18
SMART LIFE GREEN FUTURE	YIZUMI Open Week 2025: Defining a Sustainable Future YIZUMI Open Week (Sustainable Packaging Solutions)	19-30
GLOBAL OPERATION	YIZUMI Accelerates Global Market Expansion in 2024 with Strategic Milestones	31-34
GREEN DEVELOPMENT	YIZUMI Won EcoVadis Silver Cementing Green Development	35-36
DIGITAL INTELLIGENCE	YIZUMI Smart Manufacturing Boosts Chinese Industry Abroad	37-38
CASES	YIZUMI Collaborating with LEAPMOTOR on Automotive Safety Diverse Corporate Technologies: A Story of Growth with YIZUMI SpaceA Industrial Pellet 3D Printing: Enabling Custom Production of EV Parts	39-40
K 2025	K 2025, YIZUMI Interprets the "Power of Plastics" through Technological Innovation	45-46

PREFACE

Vision Oriented Innovation Led

In 2024, amidst global economic challenges and geopolitical shifts, YIZUMI demonstrated business resilience. United, we adhered to our commitment to “Think Tech Forward”, focusing on developments of Intelligent and Efficient, Global Operation and Green Development. We strengthened our management capabilities, our innovation skills, as well as our production efficiency to support our global business expansion and brand enhancement.

2024 has been a remarkable chapter for YIZUMI. We have upgraded our global production and moved toward Industry 4.0. The launch of our new products – including the NEXT² 2-platen die casting machine, the A6 series injection molding machine, and the A3 series rubber injection machine – marked new breakthroughs in our core technologies. The delivery of key projects like the LEAP9000 die casting machine, UN2400D1M injection molding machine and 3200T Thixomolding machine empowered our customers and supported the electric vehicle industry. With the groundbreaking of YIZUMI Global Headquarters and expanded operations in America, Thailand and Mexico, we have taken bold steps in our global journey, driving innovation and growth.

2024 has been a remarkable chapter for YIZUMI. We have upgraded our global production and moved toward Industry 4.0. The launch of our new products – including the NEXT² 2-platen die casting machine, the A6 series injection molding machine, and the A3 series rubber injection machine – marked new breakthroughs in our core technologies. The delivery of key projects like the LEAP9000 die casting machine, UN2400D1M injection molding machine and 3200T Thixomolding machine empowered our customers and supported the electric vehicle industry. With the groundbreaking of YIZUMI Global Headquarters and expanded operations in America, Thailand and Mexico, we have taken bold steps in our global journey, driving innovation and growth.

With humility and a fresh perspective, we must adapt and evolve to reach greater heights.

Looking ahead to 2025, we will:

- Lead with innovation to build differentiated competitive advantages and unlock new opportunities.
- Strengthen talent-development by attracting top talent and leveraging our global innovation platforms to create a leading technological ecosystem.
- Enhance product quality through advanced reliability systems, delivering greater value to our customers.
- Expand globally, with strategic market planning, regional service centers, and localized operations in key international markets.
- Optimize management and processes by building digital capabilities, streamlining production, and fostering organizational vitality to improve customer experiences from delivery to use.

YIZUMI remains committed to the path of Intelligent and Efficient, Global Operation and Green Development. By seamlessly integrating our industrial, supply, information, and value chains, we will create a more efficient, sustainable, and globally competitive value ecosystem.

Running a business is like a marathon. Chasing short-term trends brings only fleeting excitement. In an ever-changing market, steady growth, internal strength, and consistent rhythm are the keys to long-term success.

Our vision is for YIZUMI to be a platform that offers limitless possibilities for our colleagues, a company that delivers value to society through outstanding products and services, and a partner known for innovation and reliability. We aim to be a world-class molding equipment solution provider that thrives with vitality and purpose.

The future is filled with hope. Together, let us move forward with focus and determination, embracing new peaks of success.



Chairman and CEO of YIZUMI

YIZUMI Forecast 5B CNY Revenue in 2024, Global Capacity Expands

On January 10, YIZUMI released its 2024 Performance Estimate: revenue is forecast at approx. 5.05 billion CNY, up approx. 23.30% YoY; net profit attributable to the company shareholders is projected between 585 million and 646 million CNY, rising 22.53% to 35.45% YoY. The company's profitability keeps rising, firmly underpinning future growth targets.

Boosting Product Strength, Leading High-End Manufacturing

In 2024, YIZUMI adhered to the ideals of "Sustainable, Innovative Technology for Humankind," advancing its strategic directions of "Intelligent and Efficient, Global Operation, and Green Development."

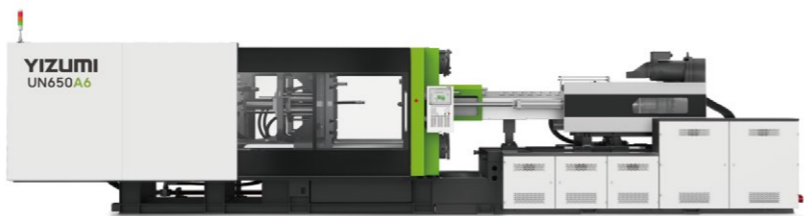


■ 7K MultiPro Injection Molding Machine

Focusing on high-end manufacturing, the company achieved significant breakthroughs. YIZUMI launched a series of strategic new products, including the NEXT² 2-platen die casting machine, the A6 series injection molding machine, and the A3 series rubber injection molding machine. These new products not only brought significant technological advancements to the industry but also demonstrated YIZUMI's foundation and innovation capabilities in high-end equipment manufacturing. YIZUMI also

successfully delivered key projects such as the LEAP9000 ultra-large die casting machine, the UN2400D1M MultiPro 7K injection molding machine, as well as the 3200T Thixomolding machine. These large-scale equipment has injected new momentum into the development of high-end manufacturing fields such as new energy vehicles and aerospace.

A6



A6 Series Injection Molding Machine

Accelerating Global Strategy, Steadily Expanding Global Footprint

YIZUMI has been accelerating its global strategic layout. The groundbreaking of YIZUMI Global Headquarters and YIZUMI East China Production Base marks a new step on our path to globalization. The operation of subsidiaries such as Thailand and Mexico, along with the expansion and production start of the Ohio factory in the United States, provide strong support for the implementation of the company's global strategy.

Additionally, YIZUMI has increased investment in R&D, production, and sales, continuously enhancing product strength to better meet the needs of global customers. Through partici-

pation in over 50 international exhibitions and hosting technical seminars, YIZUMI is actively improving brand awareness and reputation, striving to establish a more outstanding brand image in the global market.

Innovation and Talent Strategy: Dual Drivers of Competitive Advantage

Innovation is the core driving force behind YIZUMI's development. The company continues to increase R&D investment, averaging over 200 million CNY annually. In 2024, 49 new patents were added, including 11 inventions (one of which is a U.S. invention), covering multiple fields such as injection molding, die casting, rubber injection molding, robotic automation as well as 3D printing, and

factory digitalization. These patents demonstrate YIZUMI's strong innovation capabilities for future market competition.

In addition, through a three-tier R&D and innovation system comprising of the "Global Innovation Center - Division Technology Centers - Technology Department," YIZUMI has broken through in new technologies, processes and materials, forging a core competitive edge across product lines. Concurrently, YIZUMI has continuously attracted a wealth of international high-end talent. Through collaborative efforts and learning among global talents, YIZUMI ensures robust support for technological innovation, better serving its global clientele.



■ YIZUMI Global Headquarters Base (In Construction)



■ YIZUMI East China Production Base (In Construction)



■ YIZUMI Precision Machinery (Thailand) Co., Ltd



■ YIZUMI Precision Machinery (Mexico) S.de R.L de C.V.



■ YIZUMI-HPM Corporation Expansion

*Abstract:"YIZUMI's Annual Performance Forecast In 2024"

YIZUMI Awarded A-Grade Reliability Certificate, a Sector First

From November 27 to 28, 2024, the 9th National Mechanical Industry Reliability Technology Application Exchange (Seminar) Conference was successfully held in Guangzhou, China. It focused on quality innovation, reliable applications, and new productive forces, attracting over 300 experts to discuss industry development.

YIZUMI has been awarded the Mechanical Industry Reliability Management System Evaluation Certificate (Grade A) (referred to as Certificate), making it the first equipment enterprise in China to receive a certificate for building a reliability management system driven by both "technology and system".

Boosting reliability, enhancing customer value

Quality is paramount for a company's sustenance and expansion, with reliability being a critical quality attribute for mechanical industry products. Currently, reliability is a core component that runs through the entire lifecycle of equipment products and propels the high-quality development of the equipment manufacturing industry, having been elevated to a national strategic level.

Reliability is a core element of product quality and a vital part of YIZUMI's quality management. YIZUMI focuses on key reliability metrics such as high dependability, ease of maintenance, durability, quick diagnostics, safety, robust support, and predictability. Over the years, YIZUMI has enhanced its reliability management system and technology, strengthened collaboration across the industry chain, reinforced metrology and testing verification for reliability, and deeply integrated digital technology with reliability, gradually establishing a "Reliability System 2.0" to continuously improve product reliability and further enhance customer value.

Reliability across the full product lifecycle and supply chain

In YIZUMI's "Reliability System 2.0," the focus is not limited to the reliability during the product usage phase but extends to encompass the entire lifecycle and supply chain of the products. YIZUMI is dedicated to the full lifecycle reliability research, improving product performance and attributes such as operability, safety, environmental adaptability, economy, and maintainability. YIZUMI designs and manufactures equipment with high standards to deliver user-friendly, practical, durable, and efficient solutions to customers.

Massive data support, comprehensive testing and verification

"Reliability System 2.0" focuses on product reliability throughout the entire lifecycle and supply chain. YIZUMI uses methods like reliability design, DFMEA, and FTA to uncover potential design risks and refine solutions. During manufacturing, YIZUMI ensures quality through process reliability studies and PFMEA analysis. Comprehensive reliability testing and validation are conducted

at various stages of equipment development, with ample data confirming the equipment's reliability levels. Post-launch, YIZUMI regularly analyzes reliability levels and monitors product performance at customer sites, promptly preventing issues to ensure high product availability over the long term.

Earning the Certificate is a significant milestone for YIZUMI, signifying a leap in quality management and reliability. It positions YIZUMI to exceed market demands and fuels its ongoing

growth. YIZUMI will leverage this to refine its reliability practices, enhance management, and boost product quality and efficiency, driving high-quality development for its customers.



YIZUMI Breaks New Ground: Unveiling Its Global Headquarters

On September 26, 2024, YIZUMI is celebrating the groundbreaking of the YIZUMI Global Headquarters at the YIZUMI China Wusha No.3 Factory. Local government leaders, Mr. Richard Yan, Chairman and CEO of YIZUMI, and Mr. Liang Jinghua, Vice Chairman of YIZUMI, among other senior leaders and more than 200 people including business partners, investor representatives, media reporters, etc, attend the ceremony to witness this historic moment.

The YIZUMI Global Headquarters is another significant step of YIZUMI's globalization, and its groundbreaking marks that the company will present itself on the global stage with a new feature.



■ YIZUMI Global Headquarters Base (In Construction)

01_ Rooted in Shunde, China Establishing a New International Company Landmark

For more than two decades, YIZUMI has been firmly established in Shunde, China, starting its journey in a small town and evolving into a global enterprise with a significant presence in multi-fields of molding equipment.

Mr. Richard Yan, Chairman and CEO of YIZUMI, states, "The vision of 'To be a world-class molding equipment solution provider' encourages us to build a global headquarters building. We are in the construction of the diversified, modern, and international YIZUMI Global Headquarters to improve our employees' working conditions. Meanwhile, it marks an important strategic step for the company, with a focus on current development and long-term future growth."

Nestled in an industrial park and adjacent to the Desheng River, the YIZUMI Global Headquarters boasts not only a prime location but also unique natural landscapes that inspire endless possibilities for architectural innovation.

This site is set to become the foundation of YIZUMI's global expansion and a beacon of its corporate spirit, embodying the company's grand vision and unwavering commitment to the future. Mr. Richard Yan emphasizes, "We will take the construction of YIZUMI Global Headquarters as a new starting point, actively embrace the globalization, and increase our international competitiveness through global research and development, global manufacturing, and brand internationalization. In the meanwhile, we will continue to deliver better services and more beneficial equipment and solutions to our global customers."

02_ Image Promotion Highlighting the Corporate Style and Sustainability Concept

The YIZUMI Global Headquarters covers 59,720 square meters and is 60 meters tall. It embraces the design concept of a "dragon soaring over the sea", which represents YIZUMI's dynamic growth and international presence.

The architecture thoughtfully incorporates the natural beauty of the Desheng River, resulting in an eco-friendly headquarters. Its Z-shaped layout is designed to optimize landscape views and create a multidimensional aerial platform. The integrated design gives the building a sculptural shape and volumetric tension, highlighting the allure of modern architecture.

Mr. Simon Yu, Deputy Managing Director of YIZUMI, shares, "Grounded in our steadfast principle of 'Think Tech Forward', we have partnered with globally acclaimed design companies to shape this architectural masterpiece. This building will seamlessly blend modern aesthetics with practical functionality and eco-consciousness. Such an endeavor not only elevates YIZUMI's brand image, but also underscores our unwavering dedication to sustainable development."

Expected for completion in 2027, the building is set to propel YIZUMI into new realms of high-end, intelligent, and green industrial ecosystems. It will serve as both a robust backbone and a powerful engine driving our commitment to high quality development. Additionally, it aims to attract global talent and enhance our brand's global presence.

The establishment of YIZUMI Global Headquarters marks a significant step forward in YIZUMI's globalization, with the goal of accelerating technological innovation, developing new products, nurturing emerging industries, and establishing competitive advantages. This move holds immense importance in reinforcing YIZUMI's leadership in the international molding equipment industrial chain.

Mr. Samson Chen, Deputy Managing Director and COO of YIZUMI says, "The groundbreaking of YIZUMI Global Headquarters showcases our unwavering commitment to cultivating the local market, expanding our global footprint, and building a world-class equipment enterprise. We are dedicated to attracting top-tier global talent and resources for research and development, actively facilitating collaboration between upstream and downstream enterprises within the industry chain, collectively driving the advancement and thriving growth of the entire industry, and promoting high-quality manufacturing development in China and globally."

Recently, driven by the wave of global science and technology, YIZUMI is actively implementing its technological

development philosophy of "energy saving, environmental protection, high efficiency, economy, and ease of use." The company has successfully developed the 8500T ultra-large injection molding machine, the LEAP9000T ultra-large die casting machine, and other high-end manufacturing equipment that represent the industry's advanced level, thanks to breakthroughs in key core technologies.

The NEXT² series 2-platen die casting machine exemplifies YIZUMI's forward-thinking approach to the industry. It incorporates multiple patented technologies, breaks down top manufacturers' technical obstacles, and offers more competitive solutions to worldwide customers.

In the future, YIZUMI will take this global headquarters as a new starting point, making concerted efforts to continuously drive technological innovation and provide new momentum for the optimization and upgrading of China's manufacturing industry and ultimately the global industrial structure!

03_ Industrial Upgrading Developing an Independent and Controllable Industrial Chain



■ YIZUMI Global Headquarters (In Construction)

YIZUMI Global
Headquarters



* All data are derived from YIZUMI's factory experiments. Please refer to the customized equipment for product data.

YIZUMI New East China Base: New Heights in Smart Manufacturing

On December 2nd, 2025, the groundbreaking ceremony for YIZUMI East China Production Base is held with great fanfare in Nanxun, Zhejiang. This milestone not only reflects YIZUMI's strategic vision to expand from its South China headquarters to energize the East China region and lead the nation in smart manufacturing, but also marks a pivotal move in the company's efforts to enhance production capacity and strengthen its strategic positioning.

Richard Yan, Chairman and CEO of YIZUMI, LIANG Jinghua, Vice Chairman of YIZUMI, and Samson Chen, Deputy Managing Director and COO of YIZUMI, along with leaders of the Party Committee and Government of Nanxun District, business partners, investors, and journalists, totaling over a hundred attendees, are present at the groundbreaking ceremony, witnessing this significant moment together.

Foster Strategic development in East China

East China, a key engine of China's economic development, not only boasts a vast scale and significant agglomeration effects in the new materials industry but also shows a thriving trend

in multi-sector industrial cluster, demonstrating formidable vitality. In recent years, leveraging its profound industrial heritage and outstanding innovation capabilities, the region has emerged as a shining highland in China's new energy vehicle manufacturing sector.

YIZUMI, keenly assessing market trends and strategic opportunities, has chosen to establish its East China base in Nanxun, Zhejiang. This decision is based on a deep understanding of future market dynamics and aims to better serve the vast surrounding industrial clusters, thereby driving the development of intelligent manufacturing.

The establishment of YIZUMI East China Production Base will create a synergistic effect with YIZUMI China Wujiang Factory, bringing it closer to customers and markets in East China, and enabling faster, more efficient response and services. At the same time, Nanxun's unique resource advantages and superior business environment will provide momentum and support for YIZUMI's continuous exploration and rapid development in intelligent manufacturing.

The establishment of our East China Base is a pivotal move in our strategic layout. It not only responds to capacity upgrade trends in China but also captures the future development trends of intelligent manufacturing." Mr. Yan emphasized, "It will significantly promote the research, development, and industrialization of large two-platen injection molding machines, drive the widespread application and industrial implementation of digital molding equipment in the industry, and thereby contribute greatly to the robust development of the high-end equipment manufacturing industry in the East China region and across the country."

Upgrade production capacity to build industrial clusters

YIZUMI East China Production Base, a strategic move in our production capacity upgrade, spans 220,000 square meters with an investment of over 2 billion yuan. It integrates R&D, manufacturing, sales, and service, becoming a comprehensive regional base in East China.

Phase 1 of the Base, covering an area of 110,000 square meters with a planned annual production capacity of over 1,000 medium to large tonnage two-platen injection molding machines, is set to add more than capacity of 1.5 billion yuan for YIZUMI's injection molding machine product line. This initiative is expected to enhance YIZUMI's production capabilities in the East China region in synergy with YIZUMI China Wujiang Factory, thereby boosting YIZUMI's global expansion capabilities and delivery speed, laying a foundation for achieving the company's production target of over 10 billion yuan.



■ YIZUMI East China Production Base (In Construction)



With its Global Operation strategy, YIZUMI is continuously advancing its global layout and accelerating the upgrade of market expansion and customer service. Currently, YIZUMI has established multiple production bases worldwide and has set up over 12 technical service centers to meet the needs of local and neighboring customers in various countries and regions. This strategic move not only aligns with the company's commitment to integrating global resources and optimizing supply chain management but also underscores its dedication to enhancing its global footprint and service capabilities.

By the end of 2024, YIZUMI has had a total of five injection molding machine production bases in YIZUMI China Wusha No.1 Factory, YIZUMI China Wusha No.2 Factory, YIZUMI China Wusha No.3 Factory, YIZUMI China Wujiang Factory, and YIZUMI India factory. The establishment of this new base will further improve YIZUMI's industrial supply chain and cluster layout, enhance production efficiency, and reduce production costs, providing strong support for the company's global business operations.

In the future, YIZUMI East China Production Base will collaborate with other YIZUMI factories to establish a high-end intelligent equipment industry cluster that integrates the company's headquarters, factories, production bases, industrial internet, molding solutions, and incubation platforms. This initiative

aims to enhance YIZUMI's production efficiency and reduce costs, providing robust support for the company's global operations.

Digital Innovation Driving the Future of Smart Manufacturing

Amid the global shift towards advanced manufacturing, digital factories are driving the industry towards greater intelligence and efficiency. YIZUMI, as a leading provider of advanced industrial molding equipment system and services, is swiftly embracing a digital and intelligent transformation, having already successfully implemented 7 intelligent production lines.

YIZUMI East China Production Base, strategically positioned as a high-end intelligent equipment hub in the region, not only supports the company's strategic transformation and optimization of its industrial structure but also carries the mission of driving the deep integration and innovative development of new information technology with advanced manufacturing techniques.

The Base will be designed and planned to meet the standards of the world's most advanced molding equipment manufacturing factories, integrating digital technology with lean manufacturing and adopting advanced full-line production models from the automotive sector. This initiative aims to establish a digital workshop, achieving intelligent manufacturing that boosts efficiency and product quality. It will

serve as a lighthouse and benchmark in the industry, with a significant clustering effect and demonstrative role, setting a model for the digital transformation of manufacturing in East China. For YIZUMI, this is a remarkable milestone in our journey of innovation and development.

James Zhang, Deputy Managing Director of YIZUMI and General Manager of YIZUMI Injection Molding Machine Division, said, "Pursuing advanced technology is a core principle at YIZUMI. We will continue integrating new technologies and standards to set a benchmark for intelligent manufacturing in the global molding industry, enhancing our innovative productivity and competitiveness. Additionally, we are committed to green development and sustainable operations, driving the manufacturing sector towards higher-quality growth.

Nanxun, with its rich history, is welcoming the burgeoning high-tech industry with open arms. YIZUMI East China Production Base, a base that blends tradition with modernity and technology with human culture, will serve as a pivotal hub for YIZUMI's reach across East China, extending its influence throughout the nation and beyond.

Nanxun will witness YIZUMI's journey from East China to the nation and beyond. Together, we look forward to the YIZUMI East China Production Base leading the new wave of smart manufacturing with openness and innovation.

* All data are derived from YIZUMI's factory experiments. Please refer to the customized equipment for product data.

YIZUMI and KUKA Team Up for Smart Manufacturing in KUKA Open Day



On January 17, 2025, KUKA (China) Standard Product Open Day 2025 was held grandly at KUKA China Headquarters in Foshan, China. This event, a platform for KUKA to showcase its latest technologies and products, marks a significant milestone in deepening cooperation and advancing smart manufacturing following the strategic partnership agreement with YIZUMI. YIZUMI, as a key partner of KUKA, participated deeply, combining KUKA's highlights to deliver new automation experiences and solutions to attendees.

KUKA Industrial Automation, which serves industries such as automotive and home appliances, has completed hundreds of large-scale projects for Midea since 2017 and contributed to building six of the group's Lighthouse Factories. At this Open Day, KUKA provided customers with an immersive platform to experience intelligent factory automation technologies. Collaborating with YIZUMI, Yawei, BOCHU, Mech Mind, and others, KUKA unveiled a range of integrated standard products, allowing customers to witness the "superpowers" of automated production firsthand.

- Event Highlights**
- 01 +
Explore KUKA's Latest Standard Products and Solutions
 - 02 +
Interact Directly with Smart Robots and Automation Systems
 - 03 +
Connect with Industry Leaders to Unlock New Opportunities

During the Open Day, KUKA displayed a series of cutting-edge technological products, including: Teach-free welding stations, Single-robot brazing units, Explosion-proof robot IONTEC series, Arc welding workstations, Smart screw locking machines, Arm-type intelligent stamping robots, 3D safety sensor K-LT series.

Showcasing the Collaborative Achievements of YIZUMI and KUKA

At the event, YIZUMI and KUKA's intelligent robot-integrated injection molding line drew much attention. It showcased efficient and stable production through smart molding tech and seamless robot pick-up innovative injection and automated QC functions boosted efficiency and enabled High-reliability production, setting a new standard for intelligent manufacturing.

The collaboration between KUKA and YIZUMI not only drives advancements in automation technology but also injects fresh vitality into the field of smart manufacturing. We look forward to seeing the two partners illuminate the "Lighthouse of Smart Manufacturing" together, bringing more innovations and breakthroughs to the industry!



This Open Day shows KUKA and YIZUMI's cooperation achievements in smart manufacturing and guides their future collaboration. They'll deepen their strategic partnership, explore new technologies and applications in this field, and provide better products and services globally.



* All data are derived from YIZUMI's factory experiments. Please refer to the customized equipment for product data.

YIZUMI & WANHUA: Achievement for PU In-Mold Painting Technology

On March 2025, YIZUMI Precision Molding Technology Co., Ltd. (hereinafter referred to as "YIZUMI") and Wanhua Chemical (Beijing) Co., Ltd. (hereinafter referred to as "Wanhua Beijing") officially signed a strategic cooperation agreement. The signing of this agreement signifies a transition from previous project collaborations to a more profound strategic partnership between the two parties. It not only highlights the shared vision of both parties for technical innovation and market expansion but also propels the innovation and application of PU in-mold painting technology across a broader spectrum of industries.

Giant Alliance Reach New Tech Heights Together

YIZUMI, as a benchmark enterprise in China's equipment technology sector, is dedicated to the R&D and innovation of polymer molding technology. Its independently developed React-Pro PU and injection molding integrated molding solution achieves a perfect combination of injection molding and PUR in-mold painting technology. With remarkable cost-effectiveness and efficiency, it has brought a revolutionary transformation to traditional surface coating processes.

Wanhua Beijing, a wholly-owned subsidiary of Wanhua Chemical Group, stands as a leading supplier of modified isocyanate series and polyol blend products. Boasting proprietary intellectual property rights and polyurethane product solutions, Wanhua Beijing spans multiple applications and industries, delivering premium services to hundreds of enterprises worldwide. Relying on an advanced R & D platform and integrated industry chain, Wanhua Chemical develops a solution for polyurethane in-mold painting materials-Surface-form Pro. By injecting polyurethane materials into molds, the resulting products exhibit exceptional properties such as high transparency, high gloss, scratch resistance, and self-healing capabilities. With a high degree of design flexibility, this solution enables the creation of diverse colors, textures, touch-sensitive surfaces, and ambient lighting effects. It has been successfully applied in automotive interior components such as dashboards, door panels, and center console panels.



■ YIZUMI Global Innovation Center

YIZUMI and Wanhua Beijing have a long history of collaboration. Over the past two years, the two parties have engaged in deep cooperation across multiple projects, amassing a wealth of experience. For instance, at the plastic show, NPE 2024 in the United States, and the YIZUMI Mexico Open Ceremony, Wanhua Beijing's PU materials played a key role in supporting related showcases. What's more, during routine mold testing processes for customers, YIZUMI and Wanhua Beijing have frequently joined forces, demonstrating excellent synergistic effects. This strategic partnership represents a further deepening of the two sides based on the past cooperation results. Through this agreement, the two sides will move from project cooperation to deep integration, share technical resources, jointly promote the research and development and application of PU in-mold painting technology, and strive to create more efficient, stable, and environmentally friendly solutions.



In-depth Cooperation Explore New Blue Ocean Market

The in-depth cooperation between YIZUMI and Wanhua Beijing will inject new vitality into the development of PUR polyurethane reaction molding technology. YIZUMI's ReactPro technology, with its outstanding cost-effectiveness and efficiency, provides strong support for the transformation and upgrading of the manufacturing industry. Meanwhile, Wanhua Beijing's advanced material technology offers a solid foundation for the widespread application of this technology. In this cooperation, both parties will further optimize the performance and application scope of Surface-form Pro technology through collaborative innovation and technology sharing. YIZUMI will provide Wanhua Beijing with a two-platen multi-component injection molding machine. This equipment will serve as a crucial platform for jointly advancing the application of Surface-form Pro technology, facilitating technological innovation in the fields of injection molding and polyurethane materials for both parties. Additionally, YIZUMI and Wanhua Beijing plan to establish a Surface-form Pro technology application platform at Wanhua Chemical's Global R&D Center (Cishan,



■ Wanhua Chemical Cishan Global R&D Center

Yantai), aiming to provide customers with comprehensive product testing and trial molding services. This initiative will further strengthen the market collaboration between the two parties, jointly expanding the market presence of the Surface-form Pro technology.

Moving Forward Hand in Hand Creating a New Chapter for the Future

In terms of market expansion, YIZUMI and Wanhua Beijing will engage in close collaboration to jointly enhance the market visibility and influence of the PU in-mold painting technology. Both parties will share customer information, conduct joint demonstrations and promotions, and further expand market coverage through resource integration. From March 26th to 28th, at the Shanghai International Automotive Lighting Exhibition (ALE), YIZUMI and Wanhua Beijing will jointly present a set of crystal knob solutions. This not only serves as a significant showcase of the collaborative achievements between the two parties but also indicates the vast potential of the PU in-mold painting technology in high-end applications. Through this demonstration, YIZUMI and Wanhua Beijing aim to communicate the

innovative value and application prospects of the PU in-mold painting technology to the market, attracting more industry attention.

Furthermore, adhering to the principle of "mutual development and win-win cooperation," YIZUMI and Wanhua Beijing will progressively launch joint promotional activities worldwide. Through technical seminars, industry exhibitions, and other formats, YIZUMI and Wanhua Beijing will showcase the advantages and application cases of the PU in-mold painting technology to customers, further enhancing market recognition. In the future, with the deepening and expanding cooperation between YIZUMI and Wanhua Beijing, the PU in-mold painting technology is expected to be widely used and promoted across more fields. Leveraging their respective technological strengths and market resources, YIZUMI and Wanhua Beijing will rely on their respective technological advantages and market resources to jointly build stronger market competitiveness and contribute more to the transformation and upgrading of the manufacturing industry and high-quality development.

As an advanced industrial molding equipment system and service provider, YIZUMI is driving the shift from "Made in China" to "Global Innovation" through cutting-edge technologies and integrated ecosystem services.

James Zhang

Deputy Managing Director of YIZUMI
General Manager of YIZUMI Injection
Molding Machine Division
and International Business Division



James Zhang: Tech and Ecosystem: Dual-Driven for Globalization

Amid the dual waves of "Digital Reshaping" and "Regional Restructuring" in global manufacturing, Chinese equipment enterprises are facing a historic opportunity to expand overseas. Leveraging its profound technological expertise in high-end manufacturing and strong industrial chain collaboration capability, YIZUMI is accelerating its global expansion in 2025.

As the company transforms from an equipment supplier to an industrial enabler, its breakthrough strategy becomes increasingly clear. The strategic insights of Mr. James Zhang, the Deputy Managing Director of YIZUMI, General Manager of the Injection Molding Machine Division and the International Business Division, reveal the company's transformation path driven by "Cutting-edge Technology + Ecosystem Services," injecting new momentum into YIZUMI's globalization efforts.

Technological Penetration

Barrier-Breaking from Platforms to Frontline

In global manufacturing, if competition relies only on low-price traditional products, Chinese manufacturing will stay passive. YIZUMI's practice reveals a new path that breaks traditional thinking and achieves technological leadership.

YIZUMI's global footprint includes 5 global innovation platforms, 12 technical service centers, and 7 Global production bases. This layout is not just a geographical expansion but a powerful representation of global resource integration and technology diffusion.



According to Mr. James Zhang, true discourse power lies not in platform quantity, but in industry pain point insight and penetration. This penetration capability is particularly crucial in high-end manufacturing sectors such as automotive, precision electronics, and medical industries.

In 2024, YIZUMI launched the 7K injection molding machine, breaking foreign brands' long-held monopoly in multi-color injection molding. Its highlights—multi-injection unit coordination and high-precision positioning—boost complex manufacturing quality and efficiency, marking a historic leap for Chinese injection molding machine tech from following to leading global trends. This shows YIZUMI's strong R&D, blending international concepts with local expertise, and underpins China's rise in the global high-end market.

In terms of investment in R&D, YIZUMI has significantly increased its R&D investment in new technologies and products, with an annual R&D expenditure exceeding 200 million CNY over the past three years—approximately 5% of its revenue. The heavy investment has yielded substantial results:

- ◆ Over 800 R&D personnel, more than 80 product series, and over 400 technical patents
- ◆ The YIZUMI 8500T ultra-large injection molding machine, pushing the limits of large-tonnage injection molding
- ◆ The LEAP9000 ultra-large die casting machine, supporting the development of EVs market
- ◆ The electric injection molding machines extended to 1380T, completing a complete product lineup

"The essence of technological penetration is building an ecosystem loop," said Mr. James Zhang. By optimizing resource allocation and improving efficiency, YIZUMI has integrated R&D, manufacturing, market applications, and after-sales services into a cohesive system, enhancing operational efficiency and risk resilience.



Ecosystem Delivery From "Selling Equipment" to "Empowering Capabilities"

Between August 2022 and June 2024, YIZUMI underwent a profound transformation in Integrated Supply Chain (ISC) management. By recruiting a supply chain team led by a former Huawei executive, YIZUMI leveraged their extensive industry experience and advanced management concepts to redesign its supply chain business and restructure its processes. The transformation focused on redefining business operations, restructuring workflows, and enhancing IT systems. These initiatives constituted the core framework of YIZUMI's supply chain reform.

These efforts have delivered significant results in supply chain management: On-time delivery rate has increased by 18.5% while the order fulfillment cycle has been reduced by 10%. Moving forward, these changes will further enhance delivery efficiency, reduce order cycle times, and improve cost control.

In market expansion, YIZUMI has recognized that future competition will be centered around "delivery ecosystems." Mr. Jame Zhang pointed out that

YIZUMI must shift the delivery mode from "equipment" to "ecosystem", creating win-win opportunities with clients by providing comprehensive solutions.

The partnership with Leapmotor perfectly showcased the power of "ecosystem delivery mode". YIZUMI provided Leapmotor with a fully automated bumper injection solution that integrates advanced injection molding technology with automated production lines. The comprehensive system includes injection molding machines, automatic mold change systems, robotic automation, MES data management, and AGV smart logistics, achieving end-to-end automation from raw materials to finished products. This solution not only significantly enhances production efficiency but also ensures exceptional product quality, with pass rate 99%.

YIZUMI's experience demonstrates that future manufacturing competition will not be limited to individual companies but will extend to entire ecosystems. Today, YIZUMI is expanding its ecosystem collaboration across both the upstream and downstream sectors of the industrial chain. By fostering an industrial ecosystem, the company achieves resource sharing and complementary advantages. This open and collaborative mindset is laying a solid foundation for its long-term success in the "ecosystem delivery mode".

Global Coordination Establishing a "Golden Triangle" across Europe, Asia, and the Americas

Amid the wave of global economic integration, YIZUMI is guided by the philosophy of "The World as the Market," positioning the globe as a unified market system. The company is actively integrating resources and optimizing its global presence to meet the needs of customers in different regions.

Under the new development framework, YIZUMI accelerates global expansion, building production bases and partnerships. It leverages brand influence for a dual-driven approach in both Chinese and global markets.

The core of YIZUMI's globalization strategy is the construction of a three-in-one global network encompassing R&D, manufacturing, and services. This framework ensures efficient resource allocation and coordinated operations. Currently, YIZUMI is strengthening its market footprint across Europe, Asia, and the Americas through a carefully designed "Golden Triangle" strategic framework.

In Europe, the Aachen R&D Center in Germany serves as the core of YIZUMI's global innovation efforts, and is capable of rapidly commercializing R&D breakthroughs, thereby accelerating the response to global market demands. The Italian subsidiary acts as a technology hub, facilitating technological exchange. Additionally, planned subsidiaries in Türkiye and Hungary will focus on technical services, enhancing YIZUMI's service capabilities and responsiveness in the European market.

In Asia, YIZUMI's localization strategy is yielding remarkable results. The establishment India Gujarat Factory enables localized production, allowing YIZUMI to respond rapidly to the needs of the local market and provide customized solutions. Meanwhile, plans to establish a subsidiary in Indonesia and upgrade

the Vietnam subsidiary underscore YIZUMI's precise understanding of characteristics of emerging market trends and the implementation of a localization strategy, further solidifying its foothold in the Southeast Asian market.

In the Americas, YIZUMI has established a marketing network anchored by its subsidiaries in the United States, Mexico, and Brazil. The company has built a comprehensive customer service framework integrating technical services, application technology development, and pre-sales technical support. By proactively addressing client needs across the region, YIZUMI collaborates with customers to co-create new value propositions and competitive differentiation.

YIZUMI's globalization strategy is a comprehensive international growth plan. By 2030, it aims for equal Chinese and global revenue, strengthening its global market position. Mr. James Zhang emphasized that this strategy focuses on enhancing product and service quality, expanding production capacity, and supporting global business growth and brand development through management and R&D.



* All data are derived from YIZUMI's factory experiments. Please refer to the customized equipment for product data.

YIZUMI 7K Injection Molding Machine: Breakthrough and Innovation

Driven by Industry 4.0 and smart manufacturing, the manufacturing industry is moving towards intelligence, high-end, and sustainability. As a core equipment in manufacturing, the technological innovation of injection molding machines has always been a focus of the industry.

In recent years, the demand for multi-color injection molded products in industries such as automotive and home appliances has surged, while traditional injection molding machines can hardly meet the needs of high-end manufacturing. Against this backdrop, YIZUMI UN2400D1M 7K Injection Molding Machine (hereinafter referred to as YIZUMI 7K injection molding machine) is launched. With its innovative multi-injection units, high-precision control, and intelligent operation, it has propelled the technological upgrade of China's high-end injection molding machine industry and injected new vitality into the global manufacturing.

From Follower to Leader: The Technological Leap of Domestic Injection Molding Machines

The launch of YIZUMI 7K injection molding machine marks a significant leap for domestic injection molding technology, shifting from "follower" to "leader". This machine's key technological breakthroughs in multi-color injection molding have shattered the long-term reliance on imports for high-end precision injection molding equipment in China. It offers more

advanced and cost-effective solutions to high-end manufacturing sectors such as automotive and home appliance industries.

The highlights of YIZUMI 7K injection molding machine is its multi-injection units collaborative control technology and high-precision positioning capabilities, which can bring higher quality and efficiency to the production of complex process products.

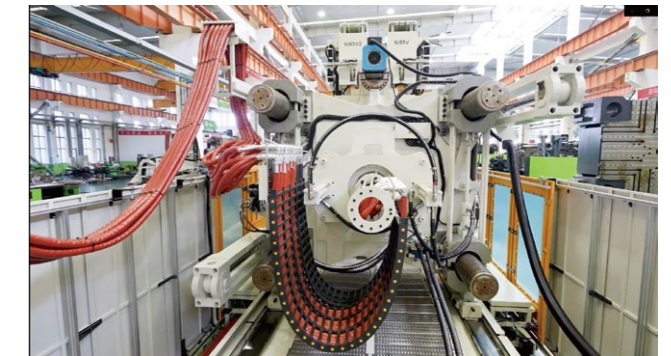
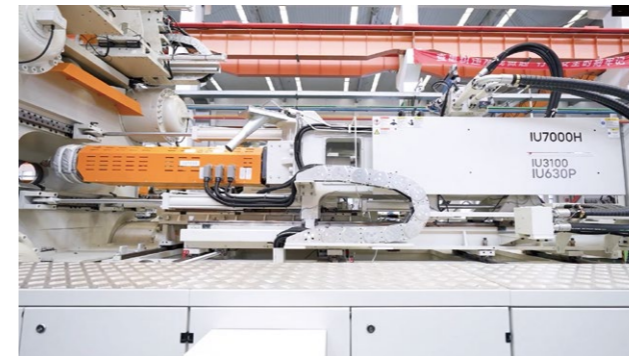
The 7K injection molding machine has three parallel injection units, A, B, and C, supporting single-color molding and combinations with other injection units for up to five-color molding. Its multi-injection units collaborative control technology requires precise timing, speed, and pressure control for perfect molding. This flexible injection unit design meets diverse customer needs, improving efficiency and shortening delivery.



■ 7K MultiPro Injection Molding Machine

In addition, its rotary table is controlled by servo technology, which offers fast speed, precise positioning, and a repeatability accuracy of $\pm 0.005^\circ$. This high-precision control technology ensures the efficiency and accuracy of multi-station rotation. Synchronized rotation of turntable pipeline and tank chain effectively reduces wear and leakage, extends the machine's service life, and lowering maintenance costs.

The unique independent temperature control system is perfectly integrated with the machine. It can operate independently and also allows for parameter settings on the KEBA control system, ensuring the precision and stability of temperature control and enhancing product quality.



Empowering High-End Manufacturing & Shaping the Future of Intelligence

High-end and intelligent manufacturing are significant trends in the future development of global manufacturing. The launch of the 7K injection molding machine demonstrates YIZUMI's precise insight into the market and its accurate grasp of industry trends.

As a high-end manufacturing tool, YIZUMI's 7K injection molding machine precisely co-injects five materials or colors in one mold. It meets the high-strength and high-precision requirements of complex parts and improves design freedom and functionality. For example, in the automotive field, it integrally forms car light components with soft rubber seals; in the electronics field, it achieves multi-component insert injection molding for thin, light electronic products with integrated functions; in the medical field, it produces medical

device components with high precision and high cleanliness.

YIZUMI 7K injection molding machine, equipped with YIMES Manufactory Execution System, can achieve more intelligent production. This includes intelligent scheduling, real-time monitoring and analysis of production data, machine status supervision, and energy consumption management. YIMES, by integrating AI algorithms, can help machines autonomously optimize process parameters and precisely control every production step, ensuring the stability and consistency of product quality. Additionally, it features remote monitoring, parameter adjustment, and predictive maintenance capabilities, which significantly enhance production flexibility and response speed, further meeting the needs of high-end manufacturing for intelligent production.

In the intelligent manufacturing trend, YIZUMI has been becoming a technology innovation practitioner and industry trend leader. Its 7K injection molding machine marks a major breakthrough in injection molding technology and an important high-end manufacturing innovation. With efficient, precise, and intelligent features, it strongly supports the manufacturing industry's transformation and upgrading, driving it towards a higher-end and smarter direction.

THINK TECH FORWARD

* All data are derived from YIZUMI's factory experiments. Please refer to the customized equipment for product data.

YIZUMI Open Week 2025: Defining a Sustainable Future

From 15th-18th April, YIZUMI will host an Open Week for Sustainable Packaging Solutions in Foshan, China, under the theme "Smart Life, Green Future". This is not just a grand showcase of cutting-edge technologies but also a significant milestone in Chinese packaging industry's journey toward sustainable future.

The sustainable packaging industry is undergoing a transformation driven by intelligent manufacturing and green innovation. YIZUMI invites you to join this Sustainable Packaging Open Week to explore breakthrough solutions and witness how China's intelligent manufacturing is shaping the future!

Leading Sustainable Packaging Innovation: Shunde at the Forefront of the Green Economy

As one of China's key manufacturing hubs, Shunde boasts a strong industrial foundation and a well-established supply chain. Here, YIZUMI leverages its technological expertise and resource integration capabilities, working closely with numerous upstream and downstream enterpris-

es, research institutions, and government agencies to drive the development of the sustainable packaging industry.

With 23 years of technological experience and a trillion-yuan industrial cluster in China's key manufacturing hub, YIZUMI is driving the global upgrade and transformation of the packaging industry.

This event will further enhance Shunde's visibility and influence in the sustainable packaging industry, attracting more high-quality resources to the region and injecting new vitality into the transformation and upgrading of manufacturing in Shunde and across China.

Starting from Shunde, YIZUMI will join hands with green packaging industry peers to launch a sustainable packaging revolution. This revolution will be driven by intelligent manufacturing and guided by green transformation, promoting sustainable development in the packaging industry worldwide.

Highlights: A Grand Feast of Sustainable Packaging

01

10+ Solutions: Unlocking new paths for packaging molding innovation

The event features dedicated sessions on PET packaging, thin-wall packaging, debut show of A6 series injection molding machine, and applications in the automotive industry, precisely catering to the diverse needs.

YIZUMI will showcase over 10 leading sustainable packaging solutions on-site, covering trillion-yuan sectors such as food, medical, cosmetics, biodegradable materials, and automotive. This event highlights YIZUMI's deep technical expertise and innovation capabilities in sustainable packaging.



Among the solutions, The PET packaging solution benchmarks advanced global technologies, providing a turnkey solution for integrated PET preform molding systems. The high-speed thin-wall molding technology pushes the limits of ultra-precision thin-wall packaging, significantly improving production efficiency. The application of biodegradable materials highlights YIZUMI's commitment to environmental protection, offering practical solutions to reduce pollution from traditional packaging materials. The medical-grade clean molding solution meets the stringent zero-contamination standards required in medical packaging.

02

YIZUMI Discovery Hall: Journey Between the Present and the Future

YIZUMI has meticulously designed the YIZUMI Discovery Hall, guiding visitors through a journey between the present and the future to explore the limitless possibilities of molding technology. Here, participants can witness firsthand how YIZUMI evolves technological innovation in urban connectivity, leads intelligent manufacturing across the transportation sector, and enhances smart living for a better quality of life.

With a fusion of artistic imagination and technological advancements, the event delivers a visually stunning experience that vividly showcases YIZUMI's technological prowess and innovative spirit, allowing participants to feel as if they have stepped into a futuristic world filled with cutting-edge technologies. Through interactive engagements with advanced equipment and direct dialogue with technical experts, participants will gain valuable insights into the crucial role of green packaging technology in the future of society, inspiring new ideas and innovations for the industry.



* All data are derived from YIZUMI's factory experiments. Please refer to the customized equipment for product data.



03
YIZUMI i-Factory: One Machine Every 15 Minutes

Efficiency, flexibility, intelligence, sustainability, and a people-centric approach –these key concepts define every aspect of YIZUMI i-Factory. From precise production planning to strict quality control, from real-time monitoring of equipment operation to automated production processes, YIZUMI i-Factory showcases remarkable efficiency and accuracy.

With a production speed of one machine every 15 minutes, a 33% reduction in production cycle, and an 80% increase in overall output, these impressive figures reflect YIZUMI's relentless pursuit of technological innovation and deep optimization of manufacturing workflows. By touring the i-Factory, participants will gain a clear view of the new directions in the development of future mechanical equipment manufacturing technology, providing valuable insights for their own business growth and technological upgrades.

04
In-depth Technical Exchange: Exploring Cutting-edge Industry Technologies

During the event, YIZUMI will also arrange face-to-face discussions between its technical experts and attendees. With extensive practical experience and profound technical knowledge in the packaging sector, these experts will analyze advanced industry technologies, share insights on intelligent manufacturing, explain the rationale behind technological innovations, and explore the latest trends in green packaging technology.

Through close interaction with the experts, attendees will have a deeper understanding of packaging industry trends and seize critical opportunities to gain a competitive edge in the market. The in-depth technical communication will not only enhance the technical expertise of participants but also drive technological progress and innovation across the entire packaging industry.



05
YIZUMI: Pioneering Sustainable Transformation in Packaging Industry

As a company deeply engaged in the field of packaging molding for many years, YIZUMI has always been committed to technological innovation and market-driven solutions, striving to provide global customers with efficient, intelligent, and eco-friendly packaging systems.

Amidst the surging wave of global smart manufacturing and the widespread consensus on green trans-

formation, YIZUMI actively fulfills its corporate social responsibility by integrating green development concepts into its strategic planning, driving the sustainable growth of the packaging industry.

A revolution in global packaging industry has started. As an industry pioneer, YIZUMI is leading this transformation with unwavering determination. Let's gather in Shunde, seize the opportunities of the green economy, and embark on a new chapter of sustainable development in the packaging industry.



* All data are derived from YIZUMI's factory experiments. Please refer to the customized equipment for product data.

THINK TECH FORWARD



Intelligent
and Efficient



Global
Operation



Green
Development



SMART LIFE GREEN FUTURE

YIZUMI Open Week (Sustainable Packaging Solutions)

An opportunity to explore green packaging and smart manufacturing solutions

E-Cigarette Cases Injection Molding Solution

The next-gen A6 series advanced and intelligent injection molding machine delivers comprehensive improvements for e-cigarette manufacturing through intelligent, precise, green, and efficient technologies. This enhances product accuracy and quality, cuts energy use and costs, and offers cross-industry customers superior solutions, driving enterprises toward intelligent manufacturing.



E-Cigarette Cases

Cavity : 4
Material : LG PC/ABS
Size (L*W*H) : 60*30*15mm
Weight : 15.1g/pc



UN160A6

4-Cavity Little Tea Cup Injection Molding Solution

The next-gen A6 series advanced and intelligent injection molding machine delivers comprehensive improvements for tea cup manufacturing through intelligent, precise, green, and efficient technologies. This enhances product accuracy and appearance, cuts energy use and costs, and offers top-notch molding solutions to customers, propelling enterprises into a smarter manufacturing future.



Little Tea Cup

Cavity : 4
Material : PCTG (TX1001)
Size(D*H) : D68*32.8mm
Weight : 17g/pc



UN160A6

YIZUMI Open Week (Sustainable Packaging Solutions)

An opportunity to explore green packaging and smart manufacturing solutions

96-Cavity High-speed Bottle Injection Molding Solution

The S450PET-BH injection molding machine for bottles is specifically designed to be compatible with the Huiyuan 96-cavity mold, capable of molding 16.5g water preforms. Equipped with a Kowey side-entry robotic arm, a Piovan integrated dehumidifying dryer, a chiller, and a dehumidifier, the system achieves a production cycle time of around 10.5 seconds, significantly enhancing production efficiency.



S450PET-BH



16.5g Mineral Water Bottle Preform

Cavity : 96
 Material : PET
 Diameter : 30/25mm
 Height : 85mm
 Thickness : 2.4mm
 Capacity : 330L
 Weight : 16.5g
 Cycle time : 10.5s(within)

Lip Gloss Bottle Molding Solution

The S200PET-C injection molding machine for lip gloss bottles is specially designed for a 8-cavity mold for lip gloss cosmetic bottles. It utilizes the G158A food-grade raw material provided by Pinliang, ensuring product safety and regulatory compliance. Equipped with a Switek top-entry robotic arm and Xiecheng peripheral auxiliaries, the machine addresses production bottlenecks, such as inadequate transparency and bottom whitening, and improves higher production efficiency. With a production cycle time of around 70 seconds, it significantly enhances production stability.



S200PET-C

Lip Gloss Bottle

Cavity : 8
 Material : PET (Plas G158A)
 Size : 16.5*99mm
 Weight : 23g
 Cycle time : 70s

Wide-mouth Bottle Injection Molding Solution

The S320PET-B injection molding machine for bottles is specifically designed to be compatible with the Shisheng 16-cavity mold, capable of molding 85mm food-grade preforms. Equipped with a Bencheng blow molding machine, a Wellman automated packaging unit, a Switek top-entry robotic arm, and Xiecheng peripheral auxiliaries, the system achieves a production cycle time of around 13.5 seconds, significantly boosting production capacity.



S320PET-B



85mm Food-Grade 29.5g Bottle Prefrom

Cavity : 16
 Material : PET
 Size : 85/120mm
 Weight : 29.5g
 Cycle time : 4000pc/h

16-Cavity Crystal lid Injection Molding Solution

The S480PET-DH high-speed packaging injection molding machine for daily storage is specially designed to be compatible with the Zongsheng 16-cavity mold, which is capable of 100mm-diameter crystal lids. Equipped with Switek top-entry robotic arms and Xiecheng peripheral auxiliaries, the system achieves a production cycle time of around 10.5 seconds, significantly enhancing manufacturing efficiency.



SS480PET-DH

Wide-Mouth Crystal Lid

Cavity : 16
 Material : PET
 Size : 100mm
 Weight : 16g
 Cycle time : 10.5s

YIZUMI Open Week (Sustainable Packaging Solutions)

An opportunity to explore green packaging and smart manufacturing solutions

PET Storage Box Injection Molding Solution

The S380PET-D injection molding machine for the storage boxes is compatible with Kangsheng's single-cavity mold for refrigerator storage boxes. It utilizes the material additive provided by Shichuangxin and systematically addresses core pain points, including insufficient mechanical strength, surface yellowing/whitening defects, and transparency issues in finished products while enhancing molding efficiency and product qualification rates. Equipped with a Switek top-entry robotic arm and Xiecheng precision auxiliary systems, the machine achieves a stable production cycle about 35 seconds.



Refrigerator Storage Box

Cavity : 1
Material : PET
Size : 287*223*171 mm
Weight : 448g
Cycle time : 35s



S380PET-D

Disposable Medical Tray Injection Molding Solution

With the growth of demand for medical consumables, the industry faces escalating requirements for production efficiency, equipment precision, and energy performance. All-electric high-speed injection molding machines are being rapidly adopted, advancing toward higher cavity configurations and shorter production cycle times, driving the sector toward precision-engineered and low-carbon manufacturing practices.

YIZUMI P-E series electric high-speed injection molding machine has the advantages of high injection speed, energy saving, high control accuracy, environmental protection, and pollution-free characteristics, which can easily cope with shorter cycles and strict production environment requirements.



Disposable Medical Tray

Cavity : 4
Material : PP
Size(L*W*H): 219.91*130.86*48mm
Weight : 21±0.5g/pc
Cycle time : 4.5±0.5s



P350E

250ml Round Bowl Injection Molding Solution

YIZUMI disposable solutions for grain-degradable material tableware have the characteristics of fast molding cycle, stable product quality, and strong compatibility.



250ml Degradable Round Bowl

Cavity : 8
Material : PP+Grain Powder
Size (D*H) : Φ110.7*46.3mm
Weight : 19.5±0.5g/pc
Cycle time : 6.5±0.5



P380S5

Comprehensive High-Speed Injection Molding Solution for 700ML Labeled Milk Tea Cups

Under fierce competition, enterprises need to achieve cost reduction and efficiency through technological innovation while meeting the needs of personalized packaging. The labeled milk tea cup technology can not only customize the appearance design, but also shorten the injection cycle and reduce the production cost. To this end, YIZUMI provides efficient, stable, and energy-saving injection molding overall solutions to help enterprises enhance market competitiveness.



700ml Milk Tea Cup

Cavity : 8
Material : PP
Size (D*H) : Φ90*180mm
Weight : 22.5±0.5g/pc
Cycle time : 6±0.5



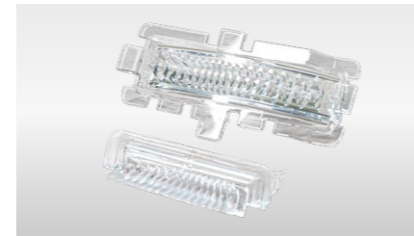
P400S5

YIZUMI Open Week (Sustainable Packaging Solutions)

An opportunity to explore green packaging and smart manufacturing solutions

LSR Automotive Lights Molding Solution

ADB intelligent automotive light LSR inner lens integrated automation solution: The LSR (Liquid Silicone Rubber) optical inner lens offers exceptional advantages, including high focusing accuracy, superior transparency, zero light leakage, excellent heat resistance, and design flexibility. This holistic solution employs optical-grade LSR material with full cold-runner mold technology, paired with dedicated electric injection molding machines for LSR optical silicone. Fully automated demolding and part removal systems ensure precision, efficiency, and energy-saving production.



ADB Smart Car Light LSR Inner Lens

Cavity : 2
 Material : LSR
 Size (L*W*H) : 55*16*25mm / 80*38*25mm
 Weight : 4.8g/12.8g
 Cycle time : 130s



FF120

Yi+ intelligent manufacturing platform

Yi+ intelligent manufacturing platform is used in the production process of the polymer material forming industry which integrates IoT, Cloud, Big Data and other new generation ICT technologies to solve the issues of equipment monitoring, efficiency statistics, equipment maintenance, troubleshooting, process parameter monitoring and traceability, etc., improving production efficiency and product + quality. Yi intelligent manufacturing platform currently includes two products: Yi MES(Manufacturing Execution System) and Yi CMS(Condition Monitor System).



Yi+ Platform

Highlights



(Intelligent manufacturing execution system)

Low cost, plug and play



(Condition monitor system)

Entire injection molding process management with flexible configuration

Yi+ 2.0 Platform's technology and highlights

- The massive data storage technology helps to trace the process and product quality with big data.
- It makes it easy to expand and integrate, and respond and integrate quickly according to the customized customer needs.
- A more user-friendly and detailed report application.
- A more intelligent and comprehensive Kanban application.



Unified

From a single machine to the entire system integration

- ◆ The overall integration of smart units with the molding equipment at its core, connecting the peripherals and automation system to create a holistic solution for interconnectivity.
- ◆ Provide the customers with a one-stop equipment interconnectivity system solution.

Digitalization

Comprehensive digital manufacturing and operations

- ◆ Focus on the pain points of the customer's manufacturing operations management and enhance the digital level wholly to create a comprehensive digital manufacturing and operations system with MES at its core, with peripheral support from APS and WMS.
- ◆ Provide the customers with a suite of in-depth integration + custom development of intelligent factory solutions.

Intelligentization

From a single machine to group intelligence

- ◆ By leveraging on the three-level maintenance management model, we provide the customers with equipment monitoring, preventive maintenance and predictive maintenance technologies for key components.
- ◆ By using massive data analytics technology, we help the customers to gain insights from the colossal volume of big data to trace the process and product quality.

YIZUMI Accelerates Global Market Expansion in 2024 with Strategic Milestones

In 2024, the pace of YIZUMI's expansion in the global market accelerated significantly. A series of major strategic initiatives were implemented successively, marking the company's solid and powerful step in the global market layout. Following the establishment of its subsidiaries in Thailand and Mexico, the Ohio factory also completed its expansion. This series of actions not only have demonstrated YIZUMI's determination to cultivate the global market but also further consolidates its global leading position in the field of molding equipment.

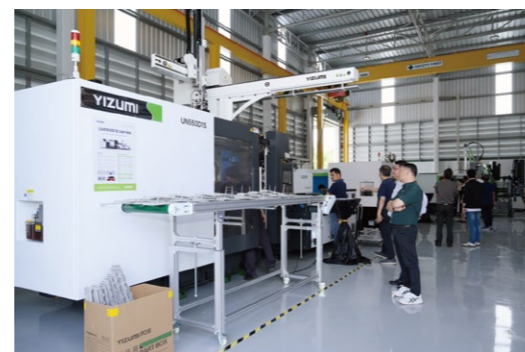


01_ YIZUMI Thailand's Opening Marks a Great Move in Global Strategy

On June 12th, local time, YIZUMI Precision Machinery (Thailand) Co., Ltd. (hereinafter referred to as YIZUMI Thailand) held a grand opening day to celebrate its opening. The establishment of the subsidiary in Thailand marks a strong and significant step in YIZUMI's globalization. Because of its tariff preferences, developing economy, upgraded infrastructure, and friendly foreign investment policies, Thailand has become one of the favorite overseas investment markets for YIZUMI.

Ms. Karen Yu, Deputy General Manager of YIZUMI Injection Molding Machine

Division, delivered a welcome speech at the ceremony. She stated that the setup of YIZUMI Thailand not only indicates our willingness to strengthen international cooperation and expand our overseas market, but it is also an important part of our development strategy. YIZUMI will make every effort to support the operation and expansion of YIZUMI Thailand, including providing top technologies and excellent after-sales service. We anticipate that YIZUMI Thailand will become a flagship of YIZUMI in Southeast Asia, bringing new growth impetus.



THAILAND

MEXICO

02_ YIZUMI Expands into Mexico to Accelerate Global Growth

Following the opening of the YIZUMI Thailand, on August 15, YIZUMI Precision Machinery (Mexico) Co., Ltd. (YIZUMI Mexico) held an open house to celebrate its official opening. This is another important milestone for YIZUMI's global strategy, following the establishment of YIZUMI Thailand in June of this year, and represents another solid step forward in its internationalization.

Mr. James Zhang, Deputy Managing Director of YIZUMI and General Manager of YIZUMI Injection Molding Machine Division, stated in his speech that as a key hub of the North and Latin American market, Mexico has provided YIZUMI with limitless development opportunities



due to its unique geographical location and solid manufacturing foundation. The establishment of YIZUMI Mexico is a critical step to entering the North American market and improving its global service capabilities. The subsidiary will leverage YIZUMI's strong technological strengths and brand advantages to provide more convenient and efficient services to local customers.

At the ceremony, YIZUMI's senior leaders and technical experts focused on the industrial features of

Mexico and North America, providing guests with excellent shares of the cutting-edge applications of injection molding and die casting technologies in the automotive industry. These shares fully showed YIZUMI's strategic layout in the global market, as well as its profound professional strengths and outstanding innovation capabilities in injection molding and die casting technologies.



* All data are derived from YIZUMI's factory experiments. Please refer to the customized equipment for product data.

03_ YIZUMI-HPM: Expanding Facility for North American Growth

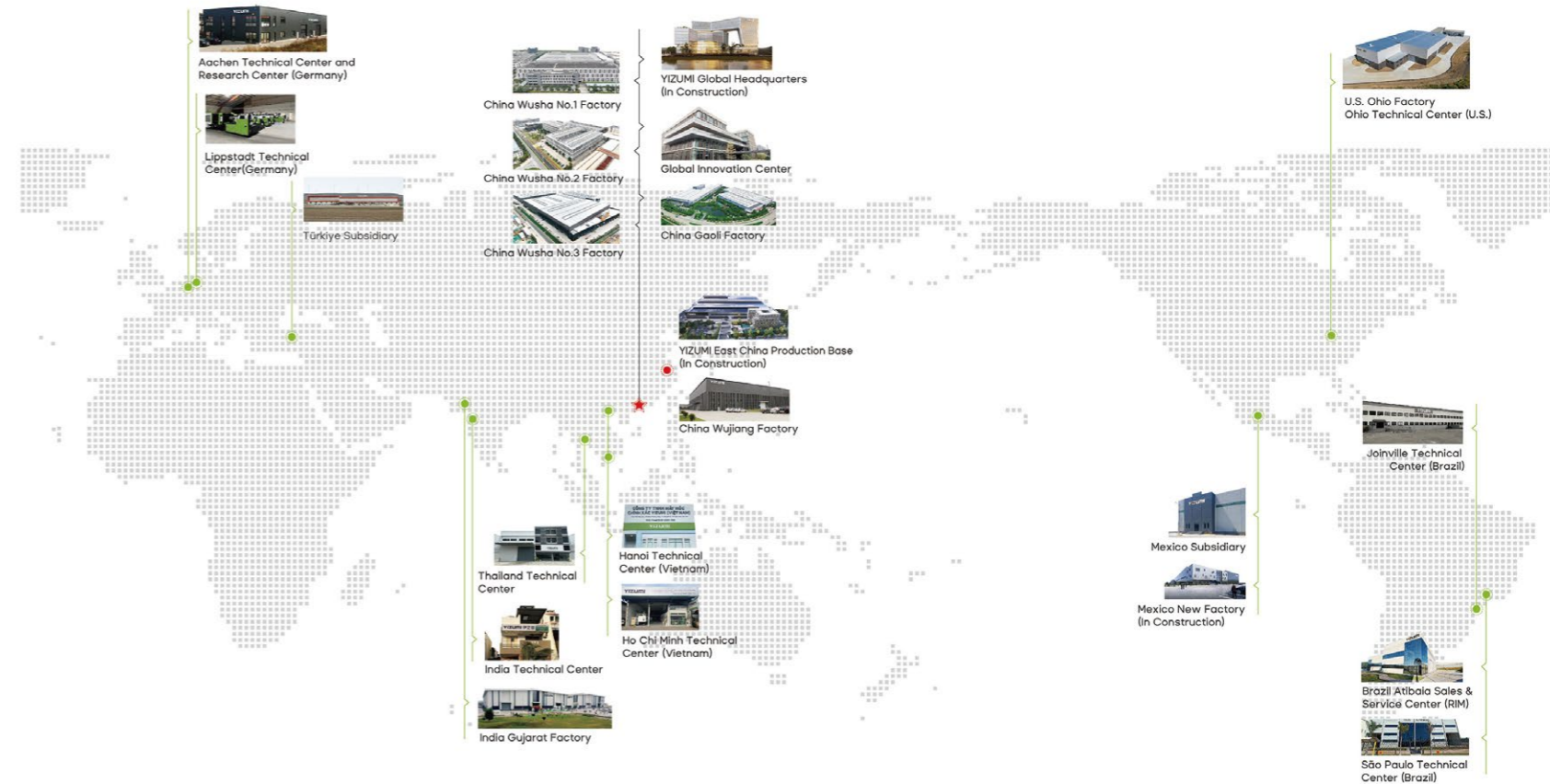
On October 10th, local time, YIZUMI-HPM held a grand ceremony for the new facility expansion at its Ohio factory, as well as an open house event. This is another significant milestone in the company's global layout. With a total investment of over \$11 million, the expansion project has become one of YIZUMI's largest investment projects in North America and globally in recent years.

During the event, Mr. Richard Yan, Chairman and CEO of YIZUMI reviewed the significant milestone for YIZUMI in 2011—the successful acquisition of HPM. He highlighted that with the well-known brand HPM, YIZUMI has strengthened its global market presence and expanded into strategic markets. The expansion project of the Ohio factory will significantly enhance YIZUMI's position in the North American and global markets, providing strong support for achieving the strategic goal of "becoming a world-class enterprise in the field of molding equipment."

The expanded Ohio factory has achieved significant improvements in production capacity and warehousing logistics, will further optimize YIZUMI's global production and supply chain network and increase responsiveness and service capabilities to the North American market.

The expanded Ohio factory has achieved significant improvements in production capacity and warehousing logistics, will further optimize YIZUMI's global production and supply chain network and increase responsiveness and service capabilities to the North American market.

U.S.A.



■ YIZUMI-HPM Corporation Expansion

04_ Proven Global Impact, Sustained Growth Ahead

YIZUMI's global strategy is gaining tangible traction as the company advances its worldwide presence. Following the successful inauguration of subsidiaries in Thailand and Mexico, coupled with the expansion and operational launch of its Ohio production facility in the United States, the company has solidified a robust global network integrating

manufacturing, sales, and service capabilities. This strategic infrastructure positions YIZUMI to deliver localized, high-efficiency solutions and responsive support to customers across international markets.

* All data are derived from YIZUMI's factory experiments. Please refer to the customized equipment for product data.

YIZUMI Wins EcoVadis Silver Cementing Green Development

Future manufacturing that embodies low-carbon, green, and smart innovation is an essential component in supporting the sustainable development of society. Yizumi Holdings Co., Ltd (hereinafter referred to as YIZUMI) has been actively shaping a greener future. Recently, Yizumi Precision Molding Technology Co., Ltd., one of YIZUMI's wholly-owned subsidiaries, was honored the EcoVadis Silver, marking a significant achievement for the company in the fields of sustainable development and corporate social responsibility.

About EcoVadis

EcoVadis is the world's largest provider of sustainability ratings, offering a comprehensive platform for assessing sustainability across the global supply chain. EcoVadis covers four dimensions (Environmental, Labor and Human Rights, Business Ethics, and Sustainable Procurement) and 21 social responsibility criteria, evaluated through three levels of management and seven management indicators: Policy (POLI), Endorsement (ENDO), Measures (MESU), Certification (CERT), Coverage - the scope of actions (COVE), Reporting (REPO), and 360° Observation Results (360).



YIZUMI constructing a green and sustainable management system

Green development is one of the three major directions for YIZUMI. Under the "dual carbon" and new energy strategy, adopting cleaner energy and reducing energy consumption will be the trend of the industry and market. As a global enterprise, YIZUMI is sensitive to the changing global market and anticipates future challenges early, so as to constantly increase the investment in innovation and energy saving strategies, and pursue environment-friendly enterprise development. In this way, YIZUMI have shown the sense of responsibility as Chinese manufacturers to the world.

With caring for the future, protecting the environment, valuing resources, and harmonious development, YIZUMI advances green operations through an enhanced environmental management system, regular eco-production oversight, and targeted performance goals, effectively embedding sustainability in its business.

YIZUMI looks forward to promoting a sustainable future. The EcoVadis Silver is a solid step forward on this path and an affirmation of the company's long-term commitment to social responsibility and environmental protection. We believe that through continuous effort and innovation, YIZUMI will make a greater contribution to building a more sustainable world.



■ The YIZUMI China Wusha No.3 Factory's Solar Photovoltaic Power Generation Project



* All data are derived from YIZUMI's factory experiments. Please refer to the customized equipment for product data.

YIZUMI Smart Manufacturing Boosts Chinese Industry Abroad

The global manufacturing industry is accelerating its intelligence transformation. Chinese enterprises are rapidly expanding their overseas markets while facing numerous challenges. As an advanced industrial molding equipment system and service provider, YIZUMI has leveraged digital and intelligent technologies to develop a smart molding solution that covers equipment, processes, and production. This helps enterprises break through geographical constraints and seamlessly replicate their efficient domestic management models overseas. The following analysis of typical scenarios will illustrate the global manufacturing competitiveness of YIZUMI.

Scene 1: Remote Fault Diagnosis

At 3 a.m., an injection molding machine at a Mexican factory suddenly stopped.

Traditionally, engineers in China would need to travel there to fix it, incurring high downtime costs. Now, YIZUMI's remote fault diagnosis system can resolve such issues swiftly.

- **Real-time response:** Over a dozen sensors inside the equipment instantly detect abnormal fluctuations in clamping force and trigger system alerts.

- **Intelligent summary:** By comparing with historical data from over 100,000 devices worldwide, the system identifies the fault cause as a clogged hydraulic valve, with 98% accuracy.

- **AR remote collaboration:** The operator in Mexico wears AR glasses, while domestic experts annotate the equipment's internal structure in real-time, guiding the replacement of spare parts.

Result: The entire process took only 47 minutes, representing an 80% efficiency improvement over traditional methods. Yi-CMS and Remote Diagnostics technology ensure overseas factory maintenance is as responsive as in China.

Scene 2: Smart Process Platform

The same mobile phone case had flash defects in Thailand's rainy season and Vietnam's dry season due to differences in temperature and humidity.

YIZUMI's Smart Process Cloud Platform Solution:

- **Real-time response:** IoT terminals collect real-time data on temperature, humidity, and air pressure, syncing it to the cloud.

- **Intelligent adjustment:** The system intelligently matches process parameters based on equipment, mold, product, and raw material data. It guides adjustments to injection speed and holding pressure, helping to find optimal settings and significantly improving yield rates.

- **Experience accumulation:** Optimized parameters are automatically stored in a dedicated process library and can be directly applied when new factories begin production.

Result: Multinational groups in Southeast Asia have achieved process standardization across factories, significantly improving product consistency.



Scene 3: Transparent Factory in Overseas

A home appliance company's Vietnamese factory faced delayed orders due to opaque production progress.

After implementing the Yi-MES system:

- **Real-time response:** Each product has a unique QR code. Scanning it displays raw material batch details, process parameters, and quality inspection records.

- **Intelligent scheduling:** The APS algorithm optimizes production by factoring in mold life, electricity price fluctuations, and logistics cycles, boosting equipment utilization by 22%.

- **Multilingual dashboard:** Users can switch between Chinese, English, and Vietnamese to monitor key metrics like OEE and energy consumption.

Result: The order delivery cycle was significantly shortened, and the customer complaint rate dropped substantially.



3. High - performance architecture: Modular design suits cloud - native, big data engines, localization and cloud - based deployment.

2. Localized Service: Technical centers in Vietnam, Mexico, and other regions provide comprehensive support, including system deployment, training, and maintenance.

Overseas strategy: From Technology Transfer to Eco - construction

YIZUMI is accelerating the globalization of Chinese manufacturing through three key strategies:

3. Open Ecosystem: Collaborations with domestic and international universities, research institutions, and partners like Kingdee and SAI deliver end-to-end solutions—from equipment to MES/MOM—for device maintenance and manufacturing operations management.

1. Lightweight Replication: The "Cloud Yi-MES + Yi-CMS" solution enables overseas factories to achieve digital transformation in production management within 4 weeks. Optional add-ons like "Remote Diagnostics" and "Smart Process" enhance flexibility.

Conclusion: Let the world share "Chinese smart manufacturing".

Technical Foundation: YIZUMI's Digital Intelligence

1. YIZUMI IoT Platform: Connects nearly 10,000 devices, processes 10TB of data daily, and supports millisecond - level responses.

2. Self - controlled industrial algorithms and software: 22 core patents covering remote diagnostics, process optimization, manufacturing, advanced scheduling, quality and energy analysis.



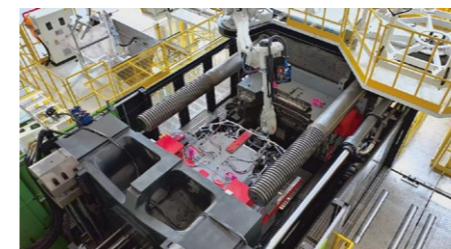
* All data are derived from YIZUMI's factory experiments. Please refer to the customized equipment for product data.

YIZUMI Collaborating with LEAPMOTOR on Automotive Safety

Since its founding, LEAPMOTOR has focused on creating cost-effective new energy vehicles. With its independent R&D and a "quality at a good price" approach, it has won the favor of consumers. The car bumper, vital part for vehicle safety, is a key focus for LEAPMOTOR's production. Now, partnering with YIZUMI, LEAPMOTOR uses its innovative solutions to ensure bumpers have top safety, cost efficiency, and environmental benefits.

YIZUMI Innovation Drives LEAPMOTOR Forward

The YIZUMI Bumper Fully Automatic Integrated Solution for LEAPMOTOR will be used to produce the front and rear bumpers for LEAPMOTOR's new energy vehicles, marking a solid step forward in advancing automotive safety technology.



YIZUMI Bumper Fully Automatic Integrated Solution

It incorporates advanced injection molding technology and an automated production line. This includes injection molding machines, automatic mold-changing systems, robotic automation, efficient cooling systems, central material supply systems, MES data management, and AGV intelligent logistics systems. It achieves full automation of the entire manufacturing process from raw materials to finished products.

The solution significantly enhances production efficiency, reducing cycle time to under 60 seconds. It also ensures extremely high product quality, with a product pass rate exceeding 99%. The repeat weight deviation is maintained within 0.3%, and the equipment energy consumption remains low, at no more than 0.36 kWh per kilogram of material.

Shaping the Future Together for Safeguarding Safety

On the path to the future of automotive industry, LEAPMOTOR and YIZUMI collaborate closely in technology and share a common vision. YIZUMI will keep enhancing communication with LEAPMOTOR, exploring more possibilities and jointly advancing automotive safety.



* All data are derived from YIZUMI's factory experiments. Please refer to the customized equipment for product data.

Diverse Corporate Technologies: A Story of Growth with YIZUMI

YIZUMI's journey in North America is a compelling tale of strategic acquisitions, technological innovation, and deep-rooted localization. Since 2011, through the acquisition of the American century-old brand HPM, expansion of local production bases, and participation in industry technical exchanges, YIZUMI has earned the trust of its customers. Today, through the insights of Brent Cordes, Production Manager at Diverse Corporate Technologies, we delve into the story of the collaboration.

Initial Steps in the World of Manufacturing Industry

In 1995, Diverse Corporate Technologies began to make its mark in the manufacturing industry. Brent Cordes reminisces, "We started with a few old injection molding machines, focusing on the production of telephone

products." Though small in scale at the time, the team was filled with passion and determination to establish a foothold in the market.

Business Transformation and Expansion

As market demands evolved, the company astutely recognized the need for change and embarked on a transformation. "We gradually shifted our focus to plumbing products and successfully developed our proprietary product line," says Cordes. This strategic shift not only broadened the company's business scope but also ushered in new growth opportunities. Additionally, leveraging the idle capacity of their machines, they ventured into customized injection molding, further boosting profitability.



Meeting YIZUMI and Starting a New Chapter

The year 2018 was a landmark for Diverse Corporate Technologies. With expanding business operations, the company urgently needed advanced injection molding equipment. Cordes recalls, "In 2018, I attended the NPE show seeking partnerships. Initially leaning towards European - made machines, I encountered YIZUMI there." YIZUMI's advantages in North America, such as local sourcing of spare parts, robust warranty, consistent bill of materials for machines of the same specifications, and its location in Ohio, made a strong impression on Cordes. This marked the beginning of a fruitful collaboration.



Deepening Cooperation for a Win-Win Future

To date, Diverse Corporate Technologies has purchased four injection molding machines from YIZUMI and plans to acquire more. "YIZUMI's machines are outstanding. Their reliability and ability to run 24/7 have greatly ensured our production efficiency," Cordes praises. YIZUMI has also offered rubber injection machines and die casting machines to meet the customers' diverse business needs. Its exploration of 3D printing technology has further enhanced efficiency in prototyping and small - scale production for the company. "YIZUMI is customer-centered, responding promptly to our needs and providing excellent after

-sales service," Cordes affirms his confidence in the partnership.

The collaboration between Diverse Corporate Technologies and YIZUMI stands as a paragon of mutual benefit and win-win outcomes in YIZUMI's North American development. Cordes expresses, "We are highly satisfied with our partnership with YIZUMI and look forward to deeper collaboration to explore more business areas and inject new power into industry development." With joint efforts, they are poised to create more achievements and lead the industry forward.



* All data are derived from YIZUMI's factory experiments. Please refer to the customized equipment for product data.

SpaceA Industrial Pellet 3D Printing: A Story of Growth with YIZUMI

The EV market is booming amid global efforts to protect the environment and promote sustainable development. High-end EV parts, from battery packs to engine management systems, from lightweight body structures to interior components, are critical. They determine vehicle performance and safety, and showcase the technical prowess and brand value of automakers.

As demand for personalized vehicles grows, customized and small-batch production are becoming trends in the high-end EV parts market. Traditional mass production can't meet the diverse market needs. EV parts manufacturers are actively seeking efficient, flexible production methods to satisfy personalized requirements and adapt to rapid market changes.

3D Printing Revolutionizing the Automotive Manufacturing Value Chain

YIZUMI's SpaceA Industrial 3D Printer, an innovative product connecting Chinese and European technologies, is now sold globally and has received positive customer feedback. It has proven highly effective and valuable, especially in automotive manufacturing.

Compared to traditional manufacturing that relies on costly molds, 3D printing is mold-free, ideal for small-batch production, and cuts initial costs. Its on-demand nature also reduces inventory and warehousing

expenses, delivering significant economic benefits to automakers.

As well traditional manufacturing technologies are running with comparable high investments and go with a high machine depending risk considering downtimes and overall OEE. In terms of special skilled workers the demand is as well lower for the running production than for traditional manufacturing processes.

SpaceA further boosts production flexibility. Its core 6-axis robot movable screw extrusion device offers a large forming space for big plastic parts. This design supports high customization, quick production adjustments, shortened product-launch time, and enhanced market competitiveness.

SpaceA excels in innovation by supporting complex geometries that drive design innovation and accelerate product development through faster testing and improvements for small-batch production.

Moreover, it is environmentally friendly. Its additive manufacturing method improves material efficiency, reduces waste, and promotes localized production, cutting transportation distances and carbon emissions for greener manufacturing.

Also in terms of the overall OEE, the production risk analysis as well as the Ratio of Part Size to Machine Footprint SpaceA Technology rules.



■ Product Printed by SpaceA

The console bracket production process is streamlined into system preparation, material selection, simulation verification, product testing, iterative optimization, and final production, all completed on-device. This reduces complex production and assembly steps. SpaceA's open material strategy allows third-party custom materials and fiber-reinforced composites like carbon fiber-enhanced granules, meeting the console bracket's performance and lightweight requirements.

Notably, injection molding face challenges with such a complex

structure. YIZUMI optimizes SpaceA's printing parameters, achieving an annual production of more than 18,000 units, reducing part weight and material costs.

Compared to traditional methods, SpaceA made console brackets would be around 20% lighter, cutting carbon emissions by around 80kg per vehicle, highlighting their lightweight and eco-friendly nature.



■ Pellet Additive Manufacturing Technology Products vs Traditional Products

SpaceA: Powering Customized Production of High-end Auto Parts

SpaceA Industrial 3D Printer offers significant cost, flexibility, innovation, and environmental benefits, strongly supporting EV accessory production.

Take the center console bracket as an example. Traditional manufacturing needs over 50 components, with complex design and high mold costs. SpaceA allows one-piece molding of the same product using a single material, eliminating assembly, and enabling flexible, rapid - iteration design.



■ SpaceA industrial 3D printing

* All data are derived from YIZUMI's factory experiments. Please refer to the customized equipment for product data.

K 2025, YIZUMI Interprets the "Power of Plastics" through Technological Innovation

From October 8 to 15, local time, the 23rd Kshow, the world's largest trade fair for the plastics and rubber industries, will be held grandly at the Düsseldorf Exhibition Center in Germany.

The Kshow, the world's largest and most advanced plastics and rubber trade fair, is a key indicator of industry trends and a major platform for global companies to showcase innovations and exchange cutting-edge technologies.

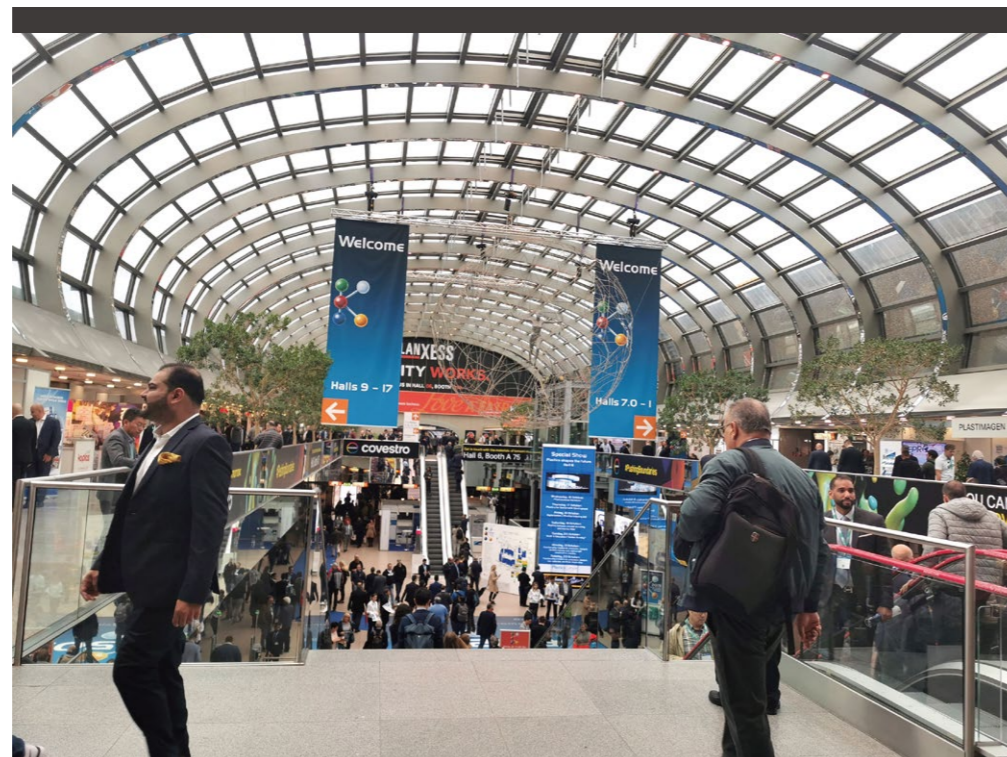
As a leading company in polymer material forming equipment, YIZUMI will showcase advanced injection molding machines and intelligent manufacturing solutions at the event.

Seizing Development Opportunities: China-Germany Trade Cooperation Continues to Deepen

Germany is the economic engine of Europe and a vital bridge for high-tech exchanges. With remarkable achievements in areas like automotive manufacturing and precision machine tools, Germany ranks high in global innovation.

In recent years, China has strengthened economic and trade ties with African and European nations through the "CHINA RAILWAY Express" and the "Belt and Road" initiative, promoting friendly development and bilateral trade.

According to the latest trade data from Germany, China has been Germany's most important trading partner from 2016 to 2023. This close trade relationship has not only promoted the economic development of both countries but also laid a solid foundation for cooperation in fields like advanced manufacturing, new energy, and environmental protection.

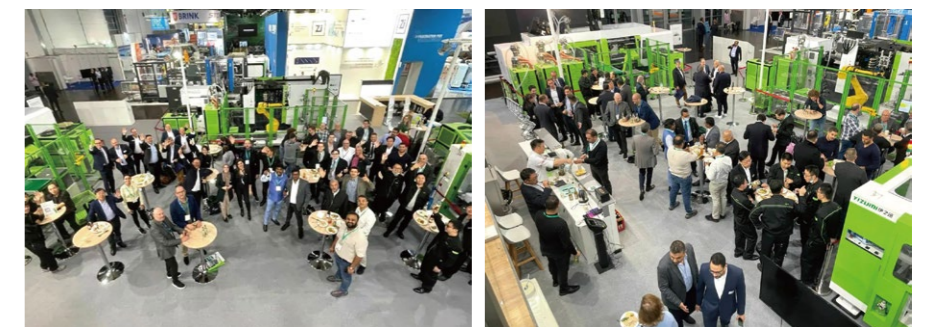


Strategic Layout Driving Technical Upgrades and Innovation

Germany is not only a key overseas market for YIZUMI but also a crucial node in its global strategy.

At the end of 2017, YIZUMI set up a R&D center in Aachen, Germany, to leverage the country's advanced industrial technology and innovation for its own technical upgrades. In recent years, YIZUMI has further expanded its business in Germany, establishing a technical service center in Lippstadt that focuses on product sales and after-sales service.

By deeply engaging with the German market, YIZUMI meets higher mid - to - high - end client demands for equipment performance, quality, and service. This market - driven approach also spurs YIZUMI's innovation, accelerating its integration with German technology and market.



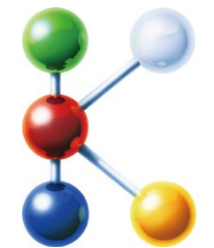
At the Industry Event Compete with Global Industry Peers

As a leader in polymer material molding equipment, YIZUMI connects with advanced European molding technologies and explores new material and new processes development, aiming to offer more competitive solutions for customers' future.

K 2025, themed "The Power of Plastics: Green - Smart - Responsible", focuses on sustainable development, smart manufacturing, and green innovation. YIZUMI, a high - polymer material molding equipment

leader, will showcase its latest tech here, competing with global industry peers.

For more information about YIZUMI's Kshow, please follow YIZUMI's social media accounts.



* All data are derived from YIZUMI's factory experiments. Please refer to the customized equipment for product data.

YIZUN

THINK
TECH FORWARD